

Ford

GALAXY



VISIONARY. INGENIOUS. REMARKABLE.
EVERY CAR BEARS HIS SIGNATURE.

Henry Ford



Galaxy Titanium
with 19" 5x2-spoke Luster Nickel alloy wheels (UK only) and Blue Panther metallic body colour (option).



Galaxy Titanium
with 19" 5x2-spoke Luster Nickel alloy wheels (UK only) and Magnetic metallic body colour (option).

CONTENTS

Introduction	2	Body colours	24
Interior comfort	4	Wheels	25
Adaptive Cruise Control	6	Interior trims	26
Panorama roof	8	Options and packs	27
Audio and connectivity	10	Accessories	28
Features and technologies	12	Dimensions and Technical Specification	30
Models overview	20		
Titanium	22		



Travel in first class

A great place to be

With its advanced technology and premium design, the Ford Galaxy combines excellent driving quality with the highest levels of space, comfort and innovation. Simply put, it's a great place to be.

Galaxy Titanium with 19" 5x2-spoke Luster Nickel alloy wheels (UK only) and Chrome Blue metallic body colour (option).

A luxurious experience in space and comfort

Designed around the needs of each of its occupants, Galaxy is spacious, refined, and technologically advanced offering luxurious travel for up to seven passengers.

Galaxy Titanium shown in Blue Panther body colour (option) with Salerno leather in Ebony seat trim (optional as part of Titanium Lux Pack).





Always looking out for you

Adaptive Cruise Control with Stop & Go*

Adaptive Cruise Control uses sensors to maintain your chosen speed when it's safe to do so, and when the vehicle in front of you slows, it helps keep you a suitable distance away.

The Stop & Go feature goes a step further. Ideal for city driving, it slows your vehicle to a complete stop when the vehicle in front of you stops. And, when the traffic begins to move again, you'll automatically pull away too.

*Adaptive Cruise Control is available as an option (part of Driver Assistance Pack) (Stop & Go feature is included for models with automatic transmission only).

Galaxy Titanium with 19" 5x2-spoke Luster Nickel alloy wheels (UK only) and Magnetic metallic body colour (option).

Panorama roof

Bring the outside in

Enjoy the beauty of the outdoors from the comfort of your Ford Galaxy. A full-length glass panorama roof lets the sunshine in and offers plenty of fresh air too, thanks to its electrically-operated sliding action. A solar reflect coating and powered sunblind provide shade and privacy when required.

Panorama roof not available in Ireland, UK model shown.





Meet your phone's new best friend

Ford SYNC 3

Ford SYNC 3 integrates seamlessly with your compatible smartphone, letting you control everything from phone calls and text messaging to music and satellite navigation – all via the 8" touchscreen or through remarkably simple voice commands. Map updates help to keep you on track and on time, and are complimentary for a limited period following vehicle registration.

SYNC 3 features

- Manage your phone, music, apps and navigation with simple voice commands
- Hear your text messages read aloud for you
- Control SYNC-compatible apps with AppLink, while Apple CarPlay and Android Auto let you navigate your smartphone through the SYNC 3 home screen, as if it were your handset
- Colour touchscreen supports multi-touch 'swipe' and 'pinch-to-zoom'

gestures, and lets you arrange application icons and background displays just as you would on your tablet or smartphone

Access additional features via your smartphone with the **FordPass App**.

- Select points of interest along your route. FordPass will send these locations to your SYNC 3 Navigation when you connect through AppLink
- Search for refuelling points by brand or fuel grade, and compare pricing
- Search available parking spaces, check costs, opening hours and ratings

Note: Full SYNC 3 smartphone integration only available with iPhone 5/Android 5.0 (Lollipop) or higher. Some SYNC 3 functions require a data connection, so mobile data charges will apply. To check whether Apple CarPlay and Android Auto are available in your market, please check official Apple CarPlay and Android Auto websites for the latest information.

Effortless connectivity

Now you and your Ford can stay seamlessly connected wherever you are. That's because the FordPass Connect modem and the FordPass App, together, unlock a range of features designed to make every journey easier.



FordPass Connect

FordPass Connect* can help save you both time and hassle, as well as give you peace of mind. It is provided as a one year free trial (from date of first registration). After this, subscription fees are payable.

- Live Traffic** provides near real time traffic information and offers dynamic routing based on traffic conditions (1 year free trial)
- Local Hazard Information** uses multiple local and national information sources to warn you of hazards in the road ahead
- On-board Wi-Fi*** allows you to connect up to 10 devices via Wi-Fi to the built-in 4G modem with FordPass Connect (1 year free trial)
- eCall† helps occupants place an emergency call to provide emergency services with the vehicle location in their respective language



FordPass App

FordPass Connect becomes even more powerful when paired with your smartphone via the FordPass App, allowing you to access a host of features.

- Remote lock and unlock your vehicle from anywhere via the app
- Use remote start to pre-condition your vehicle to its preset temperature (automatic transmission only)
- Check your vehicle's fuel level, oil health and tyre pressures straight from your phone
- Get service reminders and book your service direct from the app
- Find where you parked your car and be guided back with built-in maps
- Receive Vehicle Health Alerts directly to your phone
- Get access to exclusive customer offers

*FordPass Connect is an optional extra. The on-board modem will be connected at the time of vehicle delivery. You may choose to opt in/out of certain data sharing. The technology will be made available in selected markets in 2019, with the remaining markets following through 2020. FordPass Connect feature usage is complimentary for the first year, thereafter a subscription fee is payable.

**Access is complimentary for the first year following the registration of a new Ford featuring SYNC 3 with navigation; thereafter a licence fee is payable.

***Wi-Fi hotspot (up to 4G LTE) includes a complimentary wireless data trial for a limited time only that begins at time of activation. Afterwards, data bundles can be purchased from Vodafone. Please refer to their website for details of their data packages. To take advantage of the built-in Wi-Fi hotspot capability, Ford vehicles must come with the appropriate hardware, and a data plan is required. Data coverage and service is not available everywhere and terms of your data plan, including applicable message and data rates, may apply.

†Ford eCall is an innovative feature that helps vehicle occupants initiate a call to the local Communications Centre, following a vehicle crash event involving an airbag deployment or fuel pump shut off. The feature operates in more than 40 European countries and regions.



Forward thinking

Ford Galaxy features a range of technologies designed to help make every drive easier.

- 01 Adaptive Lighting with Dynamic LED headlights** detects different road conditions and selects the appropriate beam pattern. Dynamic curve lights throw the beam inside the curve to let you see further and sooner. The headlights incorporate daytime running lights, with three LED strips that also function as turn indicators, flashing sequentially towards the direction of turn (part of optional Titanium X pack).
- 02 Glare-free high beam** lets you drive on high beam without dazzling other road users. Sensors identify traffic ahead of your car and adjust the high beam pattern to protect other road users from glare, while illuminating the remainder of the road for greater visibility (part of optional Titanium X Pack).
- 03 Active Park Assist®** can help you to parallel park or perpendicular park. Once activated, the enhanced system can help you to locate a suitable space as you drive past and will automatically guide you in, while you operate the pedals (following on-screen and audible signals). Park-Out Assist can help you manoeuvre out of a parallel parking space in a similar way (part of optional Driver Assistance Pack).

®Uses sensors.





Added reassurance

Driving in busy city traffic can be challenging, but Ford Galaxy gives you a clearer view of what's around you and is quick to alert you should you need to take action.

01 Pre-Collision Assist with pedestrian and cyclist detection⁰ uses radar and a camera to keep a watchful eye on the road ahead for cars, cyclists, and pedestrians. The system is designed to alert you to a potential collision and, if you fail to respond, can automatically apply the brakes to help avoid or reduce the effect of any impact (standard).

02 Front wide-view camera provides an extensive view from the very front of your car to the left and right-hand sides. Particularly useful at junctions and when driving forward out of parking spaces where your side view is impaired (part of optional Driver Assistance Pack).

03 Blind Spot Information System with Cross Traffic Alert and Variable Rear Range⁰¹ If another vehicle – a car, van or lorry – enters your blind spot, the system is designed to alert you with a warning light built into the corresponding door mirror. The blind spot detection zone will vary up to a range of 18 metres, depending on the speed of the vehicle (part of optional Driver Assistance Pack).



⁰Uses sensors.

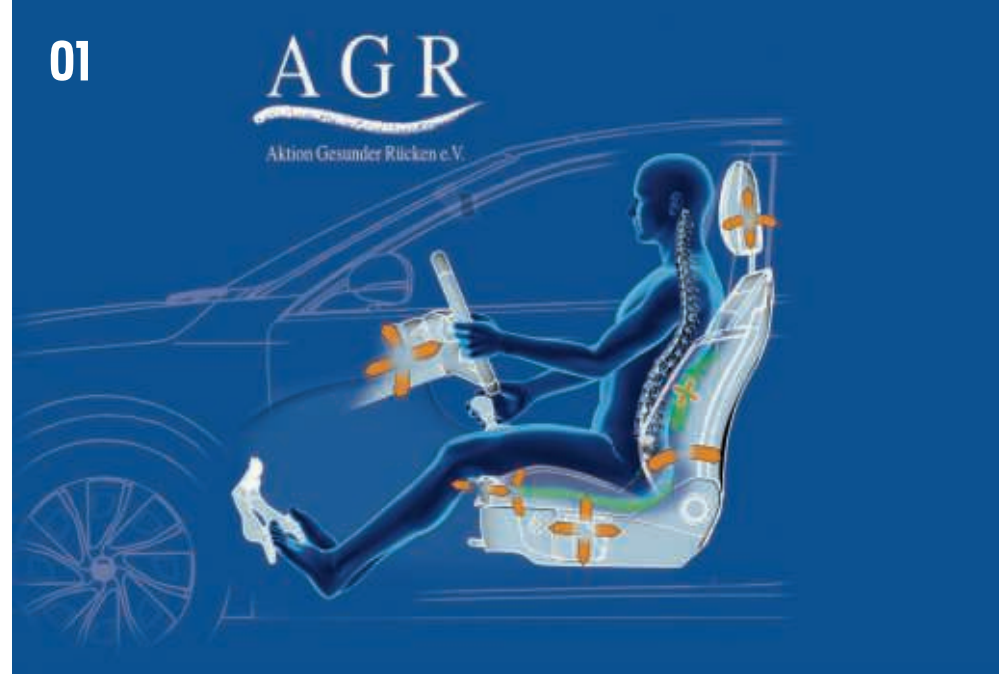
⁰¹Designed to operate at speeds above 10 km/h.

Confidence and comfort

However long your journey, and whatever the road conditions, Ford Galaxy helps you stay comfortable and in control.

- 01 Ergonomic seats with AGR certification*** help support your back. These ergonomically designed, 18-way manually-adjustable front seats with AGR accreditation are ideal for longer journeys (option).
- 02 Ford Clearview Front Wiper System** improves visibility by delivering the washer fluid directly into the path of each wiper blade as it moves across the windscreen (standard).
- 03 Intelligent All-Wheel Drive** continually monitors where power is needed, and can automatically apply the required torque to each wheel for added confidence, whatever the road conditions (available on 2.0 Ecoblue 190PS in the UK only, not available in Ireland).

*The AGR quality cachet (Aktion Gesunder Rücken = Campaign for Healthier Backs): Certified and recommended by Association Forum Healthy Back – Better Living and Federal Association of German Back Schools. More information: AGR e.V., Stader Str. 6, D – 27432 Bremervörde, Germany. Phone + 49 4761/92 63 580.



FORD GALAXY



Hands-free tailgate

Opening or closing Galaxy’s tailgate is easy, even when your hands are full. With the keys in your pocket or bag, simply use a gentle kicking motion under the centre of the rear bumper and the tailgate will operate without you having to touch a thing (part of optional Titanium X Pack in the UK only, not available in Ireland).



Ford Fold Flat System

With the luxury of seven full-size seats, space is generous in the Ford Galaxy. The innovative Easy Fold system lets you fold each second row seat flat at the touch of a button. While for the ultimate convenience, the Easy Fold with Power Raise feature helps to speed up the loading of large items by lowering and raising the third-row seating at the touch of a button (standard).



Ford MyKey

This innovative feature lets you tailor and limit car settings – like top speed and audio volume – to suit individual users (standard).

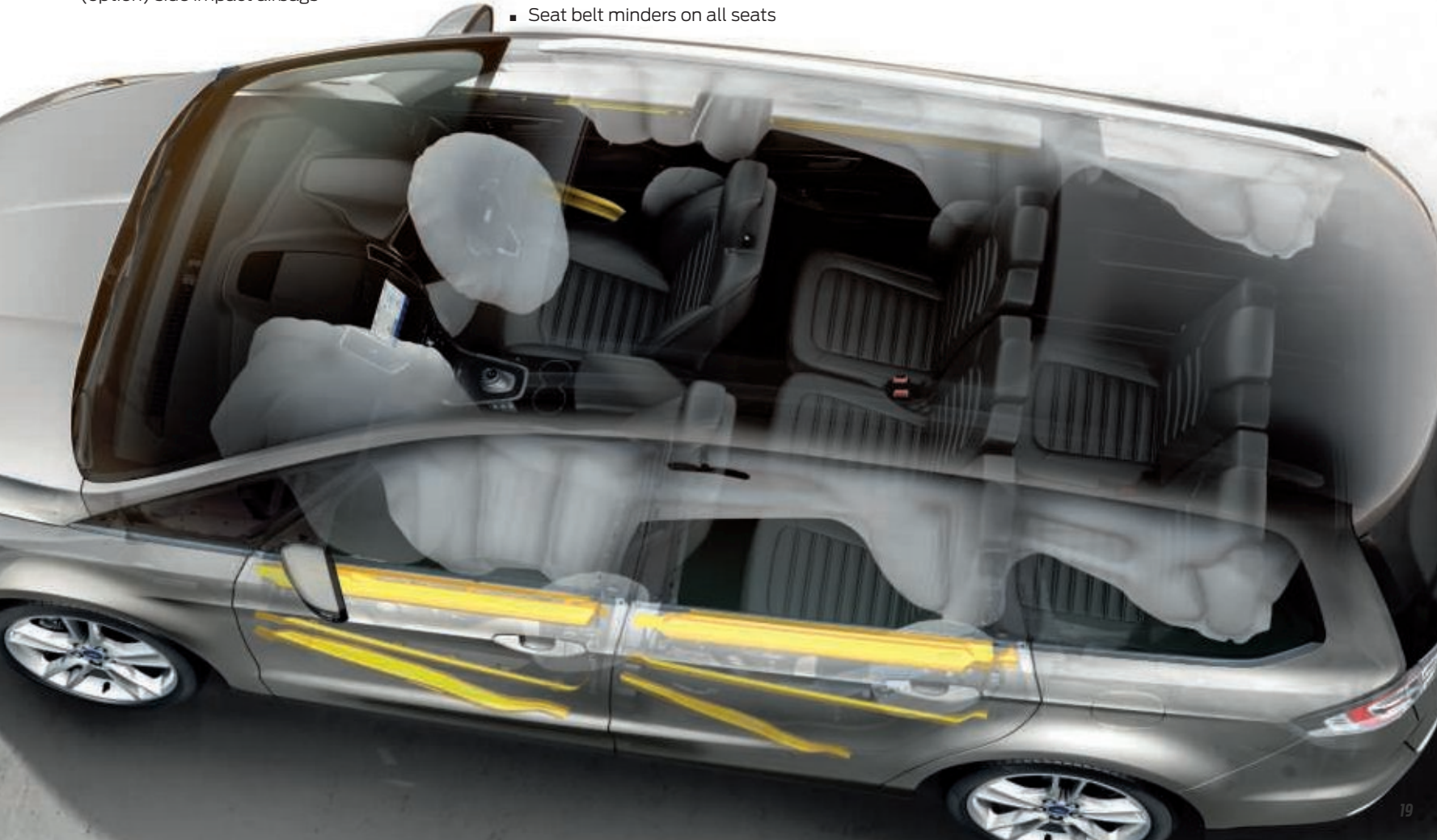
⁰Uses sensors.
¹Safety feature.
*Includes front passenger’s airbag deactivation switch.
***Note: A rear-facing child seat should never be placed in the front passenger seat when the Ford vehicle is equipped with an operational front passenger’s airbag. The safest place for children is properly restrained on the second-row seats.**

Intelligent Protection System (IPS)⁰¹⁾

Ford Galaxy’s advanced Intelligent Protection System (IPS)¹⁾ uses a range of sophisticated technologies that are designed to help keep you protected, including, Electronic Stability Control (ESC) and front and curtain airbags¹⁾.

Further standard features include:

- Driver’s and front passenger’s⁰ airbags*¹⁾
- Driver’s, front passenger’s and second row (option) side impact airbags¹⁾
- Driver’s knee airbag¹⁾
- Side curtain airbags for front and rear seats¹⁾
- Seat belt pre-tensioners and load-limiters on front and second-row seats
- Seat belt minders on all seats



Choose the right Galaxy for you

Available in two uniquely individual series, whatever your preference there is a new Ford Galaxy that's right for you. To make your purchase choice even more rewarding, we've elevated the standard of our features across all series. So now, whichever Galaxy route you decide to take, you can be sure of a high level of standard features, as well as a host of add-on features available as standalone options or part of an option pack.

Titanium



Luxury

Galaxy's luxury models deliver elevated levels of sophistication and comfort, with rich standard specification, premium materials, additional technologies and unique styling elements.

FORD **GALAXY** Models

Titanium

Key exterior features

- 17" 5x2-spoke alloy wheels
- LED daytime running lights
- Silver roof rails
- Rear privacy glass
- Automatic front headlights

Key interior features

- Ford DAB Navigation System
- 8" colour TFT cluster display
- Lane-Keeping Aid with Lane Departure Warning
- Traffic Sign Recognition
- Interior ambient lighting
- Third-row rear seats with manual fold-flat, slide and recline, and manual easy entry to the third row
- 230 V power outlet
- Ford KeyFree System with Ford Power starter button
- Automatic wipers with variable sensitivity adjustment

Engines

Diesel

2.0L Ford EcoBlue 150 PS (110 kW)

Transmissions

6 speed manual
8 speed automatic

Galaxy Titanium shown with optional Chrome Blue metallic body colour.



Chrome window surround
(Standard)



10.1" colour cluster display
(Standard)



FORD **GALAXY** Body colours



Blazer Blue
Solid body colour



Blue Panther
Metallic body colour (option on Titanium only)*



Moondust Silver
Metallic body colour*



Lucid Red
Exclusive body colour*



Frozen White
Solid body colour*



Chrome Blue
Metallic body colour*



Agate Black
Metallic body colour*



Magnetic
Metallic body colour*

*Metallic and exclusive body colours at extra cost.
†Available from mid 2020.
The Ford Galaxy is covered by the Ford Perforation Warranty for 12 years from the date of first registration. Subject to terms and conditions.
Note The car images used are to illustrate body colours only and may not reflect current specification or product availability in certain markets. Colours and trims reproduced within this brochure may vary from the actual colours, due to limitations of the printing processes used.

FORD **GALAXY** Wheels



17"
5x2-spoke Sparkle Silver finish alloy wheel
Standard on Titanium
(Fitted with 235/55 R17 tyres)



18"
Pearl Grey alloy wheel
Optional on Titanium

Note The 19" wheels available on Ford Galaxy are designed to deliver even more sporting driving characteristics and a firmer ride quality compared to the other alloy wheels.
Note All alloy wheels are also available as accessories through your local Ford Dealer at extra cost.

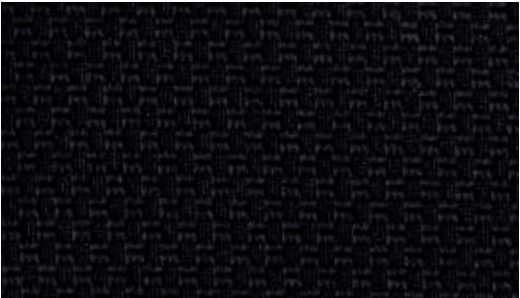
FORD **GALAXY** Trims

Made to measure

Inside the Ford Galaxy you'll experience a place of harmony and control. Unexpected premium features like Ergonomic seats with AGR certification* help support your back with their 18-way manual adjustment on the driver and front passenger seats.



Calder in Ebony
Option on Titanium (with Ergonomic seats only)



Axis in Ebony
Standard on Titanium



Solitude in Ebony
Standard on Zetec (UK Only)



Salerno leather in Ebony
Optional on Titanium (part of optional Titanium Lux Pack)

FORD **GALAXY** Options and Packs

To make Ford Galaxy even more appealing, the most relevant features offered across the range now come as standard, and the special pack line-up has been refreshed. Some options can also be ordered individually, helping you to configure your perfect Galaxy. Please speak to your Ford Dealer for more information about the options available.

Driver Assistance Pack

Adaptive Cruise Control*
Active Park Assist with parallel and perpendicular parking
Park out assist (parallel only)
Front-view camera
Rear-view camera
Blind Spot Information System (BLIS)
Ford Premium SYNC 3 Sony Nav System with 12 speakers

Titanium X Pack (Lux pack)

Adaptive LED Headlamps
Leather seats
Variable heated front seats
8-way power front seats
Power tailgate

Winter Pack

Heated seats
Heated steering wheel

Titanium



Single options

19 "5x2-spoke alloy wheel
Detachable tow bar
Tow bar pre-equipment
Self-Levelling Suspension**
Rear Seat Air Conditioning
Ergonomic seats - 18-way
Ford Premium SYNC 3 Sony Nav System
Panorama roof with rear sunblinds

Driver Assistance Pack

Titanium X Pack (Lux Pack)

Winter Pack

*The AGR quality cachet (Aktion Gesunder Rücken = Campaign for Healthier Backs): Certified and recommended by Association Forum Healthy Back – Better Living and Federal Association of German Back Schools. More information: AGR e.V., Stader Str. 6, D – 27432 Bremervörde, Germany. Phone + 49 4761/92 63 580.

*Stop&Go feature is available for automatic transmission only
**Self-Leveling Suspension is not available with All Wheel Drive (AWD)



Tow bars

Ford's power-operated retractable tow bar automatically stows itself out of sight below the rear bumper when not in use, retaining the car's sleek looks. Not available in Ireland.



Cross bars

Sturdy and lockable cross bars (only to be used with roof rails) allow you to transport loads easily and work with a selection of roof attachments (Accessory).



Load retention systems

Robust retention systems meeting European ECE-R17/ ISO27955 safety requirements keep items of luggage safely in the load compartment. A net can be ordered for fitment behind the second row of seats, while a guard is available for fitment behind either first or second row (Accessory, not available with Tri-zone Electronic Automatic Temperature Control).

Garmin®+ DashCam 65W

Provides video evidence in the event of a driving incident, giving you peace of mind. (Accessory)

Load floor net

Elasticated net attaches to tie-down hooks in the load compartment. Helps to secure smaller items and belongings. (Accessory)

Load compartment mat

Mat provides load compartment protection. Reversible design offers choice of carpet with Galaxy logo, or durable rubber surface ideal for carrying wet or dirty items. Mat can be extended over rear seats and offers fold-out bumper protection. (Accessory)

Rubber floor mats

Tray style rubberised all-weather floor mats are tailor-made to fit and help to protect against dirt and damp. The driver's mat is securely fixed directly onto the vehicle's floor to help prevent it from slipping. (Accessory)

Thule®+ roof attachments

A range of roof attachments is available, including roof boxes, bike carriers and roof ski/snowboard carriers. (Accessory)

Mud flaps

Contoured mud flaps help to protect the bodywork of your Ford Galaxy from stone chips and road spray. Available as sets for front and rear. (Accessory)



Further information on our full range of available accessories can be found here



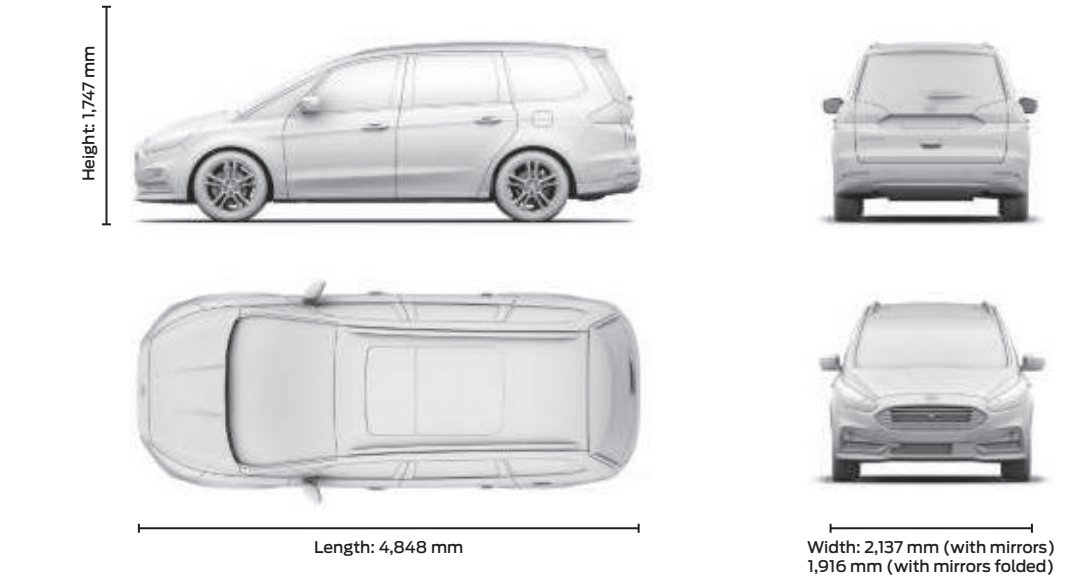
For more accessories please visit the Online Accessory Catalogue at **www.ford-accessories.ie**
For a range of Ford branded merchandise – from clothing to lifestyle products and travel utensils – visit **www.fordlifestylecollection.com**

Fitment of accessories may have an impact on your vehicle's fuel consumption.
Items ordered as an option will be fitted in the factory. If ordered as an accessory items will be fitted at the dealership.
+Item covered by third party supplier's warranty, please see inside back cover for details.

Dimensions

Exterior (mm)		
Overall length with/without tow bar	4848	
Overall width with/without mirrors	2137/1916	
Overall width with folded mirrors	1953	
Overall height (unladen)	1747	
Turning circle – kerb-to-kerb (m)	11.65*	
Luggage capacity (litres)†		
7-seat mode (laden to top of seat) (min./max.)	300	
5-seat mode (laden to roof) (nominal/max.)	1206/1301	
2-seat mode (laden to roof)	2339	
Fuel tank capacity (litres)		
Petrol	68.0	
Diesel	68.1**	
AdBlue tank	11.52	

†Measured in accordance with ISO 3832. Dimensions may vary dependent on the model and equipment fitted. *11.95m with 19" wheels, **64.4 on 4x4 variants.



WWW

Want to see the full specifications?

To view the full features and specifications of this vehicle, download the digital ebrochure or view the interactive brochure at <https://www.ford.ie> or scan the QR code.

Fuel, performance and emissions

	2.0L Ford EcoBlue diesel (with Auto Start-Stop)	2.0L Ford EcoBlue diesel (with Auto Start-Stop)
	Titanium	Titanium
Available on		
5-door		
Emission standard	Euro 6d Temp	Euro 6d Temp
Fuel type	Diesel	Diesel
Maximum Power PS (kW)	150 (110)	150 (110)
Torque Nm	370	370
CO2 emissions (g/km) (WLTP figures without options)**	161	171
Transmission	6-speed manual	8-speed automatic
Drive	4x2	4x2
Combined Fuel Consumption (WLTP figures without Options)**		
L/100km	6.1	6.5
Performance*		
Max. speed (km/h)	198	196
0-100 km/h (secs)	10.9	10.9
50-100 km/h* (secs)	10.9	n/a
Weights and loads		
Kerbweight (kg)*	1924	1935
Gross vehicle mass (kg)	2595	2605
Gross train mass (kg)	4395	4605
Max. Towable Mass (braked) (12%*) (kg)	1800	1800
Max. Towable Mass (braked) (8%*) (kg)	2000	2000
Max. Towable Mass (unbraked) (kg)	750	750

The test used to establish fuel consumption and CO₂ figures has changed to deliver results that are more representative of real driving. The Worldwide Harmonised Light Vehicle Test Procedure (WLTP) has replaced the old NEDC test. The Fuel Consumption and CO₂ figures shown are derived from the new WLTP test. This will produce more accurate figures which most likely will be greater than those arrived at using the NEDC test. Please be mindful of this in making comparisons between vehicles where some manufacturers may still display the old NEDC figures. It should be noted that vehicle registration tax (VRT) and where applicable motor tax is not based on these WLTP figures in 2020, these figures are for information purposes only.

Understanding fuel data The table shows the fuel consumption (WLTP) and CO₂ emissions (WLTP) for each available engine when fitted on a standard specification Mondeo (with no options or accessories). Adding options or accessories to your chosen vehicle can impact WLTP fuels consumption and CO₂ emissions. Please speak to your Ford Dealer for more information.

*In 4th gear, *Ford test figures. **The declared Fuel/Energy Consumptions, CO₂ emissions and electric range are measured according to the technical requirements and specifications of the European Regulations (EC) 715/2007 and (EC) 692/2008 as last amended. Fuel consumption and CO₂ emissions are specified for a vehicle variant and not for a single car. The applied standard test procedure enables comparison between different vehicle types and different manufacturers. In addition to the fuel efficiency of a car, driving behaviour as well as other non-technical factors play a role in determining a car's fuel/energy consumption, CO₂ emissions and electric range. CO₂ is the main greenhouse gas responsible for global warming.

*Represents the lightest kerbweight assuming driver at 75 kg, full fluid levels and 90% fuel levels, subject to manufacturing tolerances and options, etc., fitted. Towing limits quoted represent the maximum towing ability of the vehicle at its Gross Vehicle Mass to restart on a 12 per cent gradient at sea level. The performance and economy of all models will be reduced when used for towing. Gross Train Mass includes trailer weight.

*Gradient at sea level.

Colour and trim

	Standard body colours	Premium body colours*					Exclusive body colours*	
	Blazer Blue	Frozen White	Blue Panther	Chrome Blue	Agate Black**	Moondust Silver	Ruby Red**	Magnetic
Titanium								
Axis in Ebony Cloth Seats								
Calder in Ebony with Ergo Seat								
Salerno Leather in Ebony (part of optional Titanium X Pack)								

- Available
- Available as an option
- Available as part of a pack

*Metallic and premium metallic paints, full leather trim and Ergo seat are optional, at extra cost. **Agate Black and Lucid Red Available from January 2020. replacing Shadow Black and Ruby Red deleted at January 2020.

Styling and appearance

	Titanium
Wheels	
Alloy – 17", 5x2-spoke alloy wheels (fitted with 235/55 tyres)* with blue centre caps	
Alloy – 18" Pear Grey alloy wheels (fitted with 235/50 tyres)	
Tyre inflator kit, in lieu of spare wheel	
Locking wheel nuts	
Design features	
Chrome finish on upper doorline	
Door mirrors – Power-operated, heated and power-foldable with body colour housings, side indicators and puddle lights	
Door handles – Body colour	
Exhaust – Dual	
Front bumper – Painted body colour upper, painted body colour lower	
Front fog lights – LED	
Fog light bezel – Carbon Black (high gloss) bezel (Vignale style) with Bright Chrome surround	
Front lower grille – High Gloss and Matt Carbon Black	
Front upper grille – High Gloss and Matt Carbon Black chrome finish horizontal bars and surround	
Active grille shutter	
Roof rails – Silver finish	
Power-operated tailgate (as part of Titanium X Pack)	
Rear bumper anti-scratch pad – Self colour	
Rocker panel mouldings – Self colour	

- Standard
- Option at extra cost
- Part of an option pack at extra cost

Note: the 19" wheels available on Ford Galaxy are designed to deliver more sporting driving characteristics and a firmer ride quality compared to standard 17".

Styling and appearance

		Titanium
	Rear privacy glass	<input checked="" type="checkbox"/>
	Trailer Coupling Pre-equipment Electrical-Kit (Automatic transmission only)	<input type="checkbox"/>
	Scuff plates – Bright finish front door	<input checked="" type="checkbox"/>
	Paint	
	Paint – Solid	<input checked="" type="checkbox"/>
	Paint – Metallic	<input type="checkbox"/>

Driving experience

Titanium	
Driver assistance	
Cruise control – Includes Speed Limiter and Intelligent Speed Assist	<input type="checkbox"/>
Adaptive Cruise Control (with Stop& Go for automatic transmission only – with optional Driver Assistance Pack)	<input checked="" type="checkbox"/>
Pre-Collision Assist with pedestrian and cyclist detection	<input type="checkbox"/>
Blind Spot Information System with Cross Traffic Alert (part of optional Driver Assistance Pack)	<input checked="" type="checkbox"/>
Lane-Keeping System (including Lane-Keeping Aid, Lane-Keeping Alert, auto high beam, Driver Alert and autowipers	<input type="checkbox"/>
Active Park Assist (enhanced) – Including perpendicular park assist and Park-Out assist (part of optional Driver Assistance Pack)	<input checked="" type="checkbox"/>
Front video camera with split-view (includes rear-view camera)(part of optional Driver Assistance Pack)	<input checked="" type="checkbox"/>
Rear-view camera (part of optional Driver Assistance Pack)	<input checked="" type="checkbox"/>
Parking distance sensors – Front and rear	<input type="checkbox"/>
Traffic Sign Recognition	<input type="checkbox"/>
Electric power-assisted steering (EPAS)	<input type="checkbox"/>

Driving experience

	Titanium
Exterior lighting	
Headlights – Courtesy delay	<input type="checkbox"/>
Headlights – Halogen projector	<input type="checkbox"/>
Headlights – Adaptive headlights (with Glare-free high beam and dynamic levelling (part of optional Titanium X Pack)	<input checked="" type="checkbox"/>
Headlights – LED daytime running lights	<input type="checkbox"/>
Headlights – Manual levelling control	<input type="checkbox"/>
Headlights – Dynamic auto levelling (included with Adaptive Glare-Free high beam LED headlights part of Titanium X Pack)	<input checked="" type="checkbox"/>
Headlights – Auto-lighting	<input type="checkbox"/>
Front fog lights – LED	<input type="checkbox"/>
Front fog lights – Cornering lights	<input type="checkbox"/>
Rear lights - LED	<input type="checkbox"/>
Shift Indicator light (Enabled)	<input type="checkbox"/>
Instruments and controls	
Shift transition with paddle shifters	<input type="checkbox"/>

Standard Option at extra cost ☐Part of an option pack at extra cost 

Performance and efficiency

Comfort and convenience

[illegible]

Comfort and convenience

Seating	
Front seats – Comfort-style	<input checked="" type="checkbox"/>
Front seat – 4-way manual driver seat (fore/aft/up/down) with driver's manual lumbar support adjustment	<input checked="" type="checkbox"/>
Front seat – 18-way ERGO front seats, includes manual 8-way seat adjust, lumbar seat 4-way power, front 4-way head restraint, seat recliner-lever and cushion extension	<input type="checkbox"/>
Front seat – 10-way power driver seat with mirror and seat memory function (power fore/aft/up/down/recline/tilt/2-way power lumbar) (Titanium Lux Pack)	<input checked="" type="checkbox"/>
Front seat – 4-way manual passenger seat (fore/aft/up/down/recline) with passenger's manual lumbar support adjustment	<input checked="" type="checkbox"/>
Front seat – 10-way power passenger seat (fore/aft/up/down/recline/tilt/2-way power lumbar) (Titanium Lux Pack)	<input checked="" type="checkbox"/>
Front seats – 4-way manual height adjust passive head restraints	<input checked="" type="checkbox"/>
Front seats – Seat back tray tables (not available with ERGO seats)	<input checked="" type="checkbox"/>
Seats – Leather-trimmed (with optional Titanium Lux Pack)	<input checked="" type="checkbox"/>
Rear seats – Second row seats with manual easy entry, (fold-flat, slide and recline)	<input checked="" type="checkbox"/>
Rear seats – Third row seats with manual fold-flat, slide and recline and manual easy entry to the third row (on Titanium with ERGO seats only)	<input checked="" type="checkbox"/>
Rear seats – Third row seats with easy fold-flat and power raise, slide and recline and manual easy entry to the third row (not available with ERGO seats)	<input checked="" type="checkbox"/>

Titanium

Standard

Option at extra cost

Part of an option pack at extra cost

Note: The Bluetooth® word mark and logos are owned by the Bluetooth SIG, Inc. and any use of such marks by Ford Motor Company Limited and its associated companies is under licence. Other trademarks and trade names are those of their respective owners.*Ford Emergency Assistance is an innovative SYNC feature that uses a Bluetooth®-paired and connected mobile phone to help vehicle occupants initiate a direct call to the local Communications Centre, following a vehicle crash event involving an airbag deployment or fuel pump shut off. The feature operates in more than 40 European countries and regions.

Comfort and convenience

		Titanium
Instruments and controls		
Door mirrors – Power-operated, heated and power-foldable with body colour housings, side indicators and puddle lights		
Wipers – Automatic windscreen wash and wipe with variable sensitivity adjustment (included with auto-dimming rear-view mirror)		
Wipers – Ford Clearview Front Wiper System		
Gearshift knob – Leather-trimmed (manual transmission only)		
Rotary gearshift knob (automatic transmission only)		
Steering column – Rake- and reach-adjustable		
Steering wheel – Leather-trimmed		
Steering wheel – Heated (only available as part of Winter Pack)		
Instrument cluster Level 3 – 10.1" colour TFT display		
Ford Keyless System with Ford Power starter button		
Ford Keyless System with Ford Power starter button and hands-free tailgate (only available as part of Titanium x Pack)		
Windows – Power-operated front and rear with one touch lowering/closing		
Windows – Global lowering/closing		
Black foot pedals		
Scuff plates – Bright-finish front door		
Steering column – Rake- and reach-adjustable		
Technology		
Mirror – Auto-dimming rear-view		
Quickclear heated windscreen		
MyKey		
Option packs		
Titanium X Pack - Adaptive LED Headlamps, Leather Seats in Ebony, Variable Headed Front Seats, 10-way Power Front Seats and Power Liftgate		
Driver Assistance Pack – Sony Radio/CD with DAB/navigation system with 8" touchscreen, 12 Sony speakers and Ford SYNC 3 with Voice Control and AppLink, Active Park Assist with Parallel and Perpendicular Parking, Park out Assist (Parallel only), Adaptive Cruise Control with Intelligent Speed Assistance, Traffic Sign Recognition, Front and Rear-view camera, Blind Spot Information System (BLIS)		
Winter Pack – Heated windscreen and heated steering wheel		

Safety and security

		Titanium
Safety		
Ford Intelligent Protection System (IPS) ¹⁾		
Curve Control ¹⁾		
Electronic Stability Control (ESC) – Includes Trailer Sway Control ¹⁾ and Hill Start Assist ²⁾		
Active Rollover Protection ¹⁾		
Anti-lock braking system (ABS) with Electronic Brake-Force Distribution (EBD) ¹⁾		
Airbags – Driver and front passenger's♦ ¹⁾		
Airbags – Front side impact ¹⁾		
Airbags – Driver's knee bolster ¹⁾		
Airbags – Driver and passenger first, second and third row side curtain ¹⁾		
Airbags – Rear side impact (2nd row outboard) ¹⁾		
Airbags – Passenger airbag deactivation switch ¹⁾		
Seats – ISOFIX mounting provision for rear child seats (outer seats only) ¹⁾		
Security		
Childproof locks on rear doors		
Remote, power central single locking		
Thatcham Category 1 alarm with volume sensing, perimeter alarm battery backed (includes remote central/double locking)		

Standard

Option at extra cost

Part of an option pack at extra cost

¹⁾Safety feature, ²⁾Driver assistance feature. ♦A rear-facing child seat should never be placed in the front passenger seat when the Ford vehicle is equipped with an operational front passenger's airbag. The safest place for children is properly restrained on the second-row seats.

Utility

Titanium	
Body	
Windows – Fixed rear quarter glass	
Carpet and trim	
Floor mats – Carpet, front and rear deluxe	
Electrical	
Centre console – 230 V power outlet	
Exterior functional	
Rear bumper anti-scratch pad – Self colour	
Loadspace compartment	
Load compartment 4 tie-down rings	
Loadfloor storage compartment with latch and pull cup handle	
Tonneau cover	

Standard

Option at extra cost

Part of an option pack at extra cost

Making ownership easy and affordable.

Take advantage of a range of invaluable services and make the most of your car – for as long as you own it.

FORD BlueService

Delivering total peace of mind.

With Ford, the service doesn't end when you leave the showroom. Ford BlueService is designed to keep your Ford in great condition and help you make the most of your car – throughout its life.

- **Free Electronic Vehicle Health Check with Video Reporting**
- **Free European Roadside Assistance**
- **Transparent prices**
- **A One Call number to connect you to all Ford services**

FORD PROTECT

Extend your warranty up to 7 years/100,000km with Ford Protect.

Extend your standard 2-year warranty and enjoy worry-free motoring for many years to come. Ford Protect provides a range of key benefits including:

- **High flexibility in duration and mileage**
- **Attractive annual fees**
- **Cover against unexpected repair costs**
- **Protection on trips abroad**
- **Inflation proof: all increases in repair costs are covered**
- **Prolonged lifespan of your Ford vehicle**
- **Protects your vehicle resale value**

Ford Protect terms and conditions apply see ford.ie/shop/extras/warranties for more information.



FORD GALAXY Next steps



try

Visit your Ford Dealer and test drive the Ford Galaxy for yourself. Find your local Dealer: www.ford.com/SBE/DealerLocator



build

Go online and build and price your new Ford Galaxy to your exact specification.



finance

When it comes to financing your vehicle, Ford Credit's size and expertise means they're well placed to provide you with a wide range of finance products. Ford Credit provides a range of finance products for your vehicle whether you are a private or business user.

The credit provider of these products is Bank of Ireland Leasing Ltd, trading as Ford Credit.

The FORD and FORD CREDIT trademarks are owned by Ford Motor Company and are used under licence.

For more information about the finance products provided by Ford Credit visit www.ford.ie



own

When you drive away in your new vehicle, we're with you all the way. Ford has a large authorised service network to help you keep your vehicle in the best condition.

And should your new Ford ever require accident repair, a Ford Accident Repair Centre is the best place to get your vehicle back to its pre-accident condition and on the road as quickly as possible.



FordPass

FordPass is a new platform that will empower you to rethink the way you move. Finds parking locations nearby, contains vehicle and finance details, dealer information and a host of useful guides.

Live Traffic access is free for the first 2 years following the purchase of a new Ford featuring SYNC 3 with navigation; thereafter there is an annual licence fee.



contact

Ford Credit Account Services : 0345 712 5490
Ford Lease Customer Services : 0344 600 1405



FORD Warranty and Servicing Plans

- 3-year/60,000 miles* Base Warranty (first year unlimited mileage)
- 1-year/unlimited miles* Ford Assistance Roadside Cover (Europe)
- Ford Protect Premium Plans, including scheduled servicing and extended Ford Assistance
- 3-year/60,000 miles* Paint Warranty (first year unlimited mileage)
- 12-year/unlimited miles* Perforation Warranty

Standard ☒
Optional, at extra cost ☐

*From the date of registration. Subject to terms and conditions.

Illustrations, descriptions and specifications. This catalogue was correct at the time of going to print. However, Ford policy is one of continuous product development. The right is reserved to change specifications, colours and prices of the models and items illustrated and described in this publication at any time. For the latest details always consult your Ford Dealer. **Optional equipment.** Throughout this publication, wherever a feature is described as being an 'Option' or 'Option Fitment/Pack' etc, you should assume that it will be at extra cost to the base vehicle, unless specifically stated to the contrary. All models and colour combinations are subject to availability. **Note.** Some images portrayed are of a pre-production model and/or are computer generated, therefore, the design/features on the final version of the vehicle may differ in various respects. In addition, some of the features shown on the vehicles may be optional. **Note.** This brochure contains both original Ford accessories as well as a range of products from our suppliers. Fitment of accessories may have an impact on your vehicle's fuel consumption. ♦ The identified accessories are carefully selected third party supplier branded accessories which do not come with a Ford warranty but are instead covered by the third party supplier's own warranty, the details of which can be obtained from your Ford Dealer. **Note.** The Bluetooth® word mark and logos are owned by the Bluetooth SIG, Inc. and any use of such marks by Ford Motor Company is under licence. The iPod word mark and logos are the property of Apple Inc. Other trademarks and trade names are those of their respective owners. **Note.** Some driver assistance features and safety features described in this brochure are designed to function using sensors, whose performance may be affected under certain weather or environmental conditions.

Published by Henry Ford & Son Limited,
Elm Court, Boreenmanna Road, Cork,
Ireland.
Registered in Ireland No. 4441.
BJN 208157. FoE I30E
0920/IRL en
August 2020.
© Henry Ford & Son Limited.



All Galaxy Models

en
MY 2020 IRL

