

Ford

TRANSIT CONNECT



**VISIONARY. INGENUOUS. REMARKABLE.
EVERY VEHICLE BEARS HIS SIGNATURE.**

Henry Ford

CONTENTS

Introduction	02	Driver assistance technologies	14	Colour and trim	32
Audio and communication	04	Remarkable Technologies	22	Options and accessories	34
Loadspace	06	Leader	24	Ford Protect	36
Load capacity and payload	08	Trend	26	Specifications	38
Engines	10	Limited	28	Stowage/Next steps	52
Cost of ownership	12	Sport	30		



Model shown is a Transit Connect Van Sport L1 in Chrome Blue metallic body colour (option).



Model shown is a Transit Connect Van Trend L2 in Dark Carmine Red metallic body colour (option) and 16" 5x2-spoke alloy wheels, painted Sparkle Silver (option).

Built for the toughest of tasks

Functionality is key to the new Transit Connect. So, you'll find a versatile and easily-accessible loadspace, a choice of wheelbase lengths and a comfortable driving environment, all wrapped in a bold new shape. Designed from the very start as a hard-working commercial vehicle its advanced engine technology optimises power and fuel efficiency whilst meeting the latest Euro Stage 6.2 emissions standard.

Model shown is a Transit Connect Van Limited L2 in Moondust Silver metallic paint (option) with 16" 5x2-spoke alloy wheels, painted Sparkle Silver, Large door mirrors, dual side load doors (option) and full steel bulkhead with load-through hatch.

360°





Meet your phone's new best friend

Ford SYNC 3

Ford SYNC 3 integrates seamlessly with your smartphone, letting you control everything from phone calls and text messaging to music and satellite navigation - all via the 6" touchscreen or through remarkably simple voice commands. We're committed to enhancing and improving upon the SYNC & Maps driving experience and will periodically release software updates so you have the latest version of SYNC & Maps.

SYNC 3 features

- Manage your phone, music, apps and navigation with simple voice commands
- Hear your text messages read aloud for you
- Emergency Assistance[†] helps occupants place an emergency call to provide emergency services with the vehicle location in their respective language
- Control SYNC-compatible apps with AppLink, while Apple CarPlay and Android Auto let you navigate your smartphone through the SYNC 3 home screen, as if it were your handset
- Colour touchscreen supports multi-touch 'swipe' and 'pinch-to-zoom' gestures,

and lets you arrange application icons and background displays just as you would on your tablet or smartphone

Access additional features via your smartphone with the **FordPass App**.

- Select points of interest along your route. FordPass will send these locations to your SYNC 3 Navigation when you connect through AppLink
- Search for refuelling points by brand or fuel grade
- Search available parking spaces, check costs, opening hours and ratings

Born connected

Only Ford can deliver a fully connected ecosystem that is built in from the start. The FordPass Connect* modem and the FordPass App make the job easier, unlocking a range of efficiency and security features.



FordPass Pro** gives you the tools to look after your business vehicles. Designed especially for owner operators and small business owners, its features and services help you keep your vehicles healthy, secure and running smoothly.

- **Keep track** of all your vehicle locations (up to five) on one map
- **Check vehicles are locked** and lock them remotely wherever you are, to ensure everything's safe and secure
- **Be alerted of any issues** with your vehicles and see their key health info all in one place, so you know when they need attention and can avoid surprise costs later on
- **Receive reminders** for important dates like MOT and services, to help you plan ahead and keep vehicles on the road

FordPass Pro is available in selected markets. Please see your Ford Dealer for details.



- **Alarm Notification** if the alarm is triggered you will be notified in the FordPass App, helping to keep your vehicle secure
- **Remote Lock & Unlock** lets you check if the vehicle is locked and to lock it remotely, no matter how far away you may be
- **Find** nearby parking spaces and filter by minimum vehicle access height
- **Vehicle Status** helps drivers keep on top of basic maintenance, quickly check they have enough fuel and that the tyre pressures are correct for the current load



- **Live Traffic[†]** sends up-to-date traffic information directly to the SYNC 3 Navigation system. The technology then adjusts the recommended route based on the traffic conditions, so you waste less time on the way to your next job
- **On-board Wi-Fi^{††}** with speeds of up to 4G this enables mobile working for up to 10 devices. You can even use the hotspot from up to 15 m outside the vehicle for more efficient mobile working when you get to the site

Ford Data Services^{TM‡}

With Ford Data ServicesTM and FordPass Connect you can receive vehicle data securely to either your own telematics application or via your chosen Telematics Service Provider. Data available includes: vehicle health, vehicle location, fuel usage and driving characteristics, and can be received on multiple vehicles. Data can be integrated with your existing in-house application or your chosen Telematics Service Provider.

Ford Telematics^{TM‡}

With Ford TelematicsTM and FordPass Connect you can easily view data and manage all your vehicles using our intuitive user dashboard. Receive data on multiple vehicles including: vehicle health, vehicle location, fuel usage and driving characteristics. The information is presented with actionable insights that deliver the data you need to manage your fleet.

*FordPass Connect is standard on vehicles produced from June 2020 (optional on prior production). The on-board modem will be connected at the time of vehicle delivery. You may choose to opt in/out of certain data sharing.

**FordPass Pro, or certain features of FordPass Pro, may require a paid subscription either now or in the future.

[†]Live Traffic updates and certain FordPass Connect features are complementary for initial trial periods, after which subscription charges apply.

^{††}Wi-Fi hotspot (up to 4G LTE) includes a complimentary wireless data trial for a limited time only that begins at time of activation. Afterwards, data bundles can be purchased from Vodafone. Please refer to their website for details of their data packages. To take advantage of the built-in Wi-Fi hotspot capability, Ford vehicles must come with the appropriate hardware, and a data plan is required. Data coverage and service is not available everywhere and terms of your data plan, including applicable message and data rates, may apply.

[‡]Ford Data ServicesTM and Ford TelematicsTM require a valid contract and account subscription.

Please note: Full SYNC 3 smartphone integration only available with iPhone 5/Android 5.0 (Lollipop) or higher. Some SYNC 3 functions require a data connection, so mobile data charges will apply. To check whether Apple CarPlay and Android Auto are available in your market, please check official Apple CarPlay and Android Auto websites for the latest information.

[†]Ford Emergency Assistance is an innovative SYNC feature that uses a Bluetooth[®]-paired and connected mobile phone to help vehicle occupants initiate a call to the local Communications Centre, following a vehicle crash event involving an airbag deployment or fuel pump shut off. The feature operates in more than 40 European countries and regions.

Big on space, big on choice

Optimised loadspace.

Choose from two wheelbase lengths and three bodystyles to create a load capacity from 1.2 cu.m to 3.6 cu.m, with a potential payload of up to 865kg.

- Full-height, full-width glazed or unglazed steel bulkhead (Van)
- Moveable full-height, full-width mesh bulkhead (Double Cab-in-Van)
- Load-through bulkhead can accommodate 3.4-metre long items (L2 Van), or 3.0-metre long items (L1 Van)
- Room for up to four 8'x4' boards (L2 Van)
- Sliding kerb side load door (standard on Van)
- Twin sliding side load doors (option on Van, standard on Double Cab-in-Van)
- Single front passenger seat (Van)
- Two first row seats and three second row seats (Double Cab-in-Van)

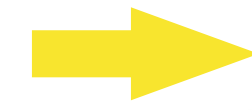


Cargo or passengers? You don't have to choose
 A choice of seating configurations, for two to five people, offers a high level of flexibility between loadspace and passenger accommodation.

3.0 m/3.4 m

Load length with load-through bulkhead
 Carry items up to 3.0 metres long in the L1 Van with the ingenious load-through bulkhead. L2 models can hold 3.4-metre long items. (Option)

250,000 door shuts

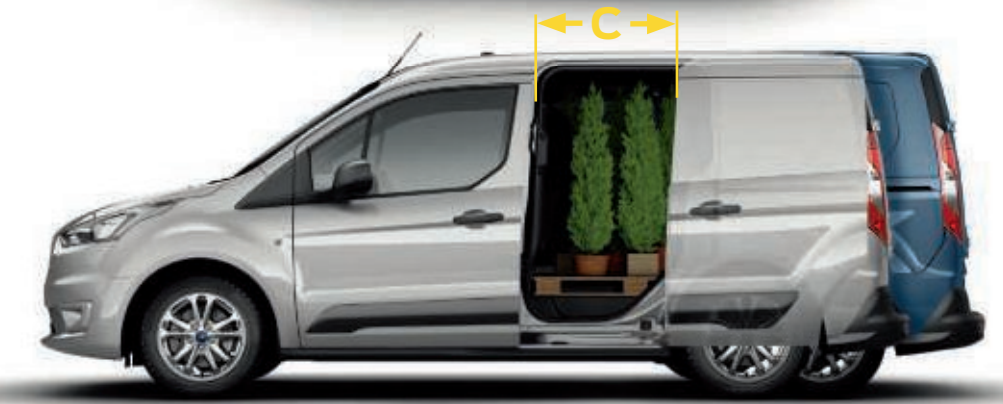


We opened and closed the doors and bonnet over 250,000 times in real-world conditions to help ensure they will never let you down.



Easy loadspace access
 Access to the flexible loadspace is easy, thanks to wide-opening doors and a low loading height.

A: 1,249 mm
B: 1,269 mm
C: 433 mm (L1)/660 mm (L2)



L1 4,425 mm
 L2 4,825 mm

H11,830 mm (L1) / 1,828 mm (L2)

Van load capacity and payload

2.9
cu.m



Van Short wheelbase (L1)

Max. gross payload* up to 865 kg
Gross vehicle mass from 2,090 kg to 2,405 kg



Europallet x1
2 seats



3.6
cu.m



Van Long wheelbase (L2)

Max. gross payload* up to 834 kg
Gross vehicle mass from 2,165 kg to 2,405 kg



Europallets x2
2 seats



Double Cab-in-Van load capacity and payload

1.2
cu.m



Double Cab-in-Van Short wheelbase (L1)

Max. gross payload* up to 782 kg
Gross vehicle mass from 2,255 kg to 2,380 kg



Europallet x1
5 seats



1.6
cu.m



Double Cab-in-Van Long wheelbase (L2)

Max. gross payload* up to 741 kg
Gross vehicle mass from 2,385 kg to 2,405 kg



Europallet x1
5 seats



*Gross Payload = Gross vehicle mass less kerb mass. All kerb masses quoted in this brochure are for models with minimum equipment. Any additional options specified on the vehicle will reduce the payload accordingly. It must be noted that actual weight will always be subject to manufacturing tolerances which may result in payload variations between the quoted figures and actual weight. NB: It is the responsibility of the vehicle operator to ensure their vehicles are legally compliant for road use.



8'x4' bulkhead

L2 Van models can carry up to four 8'x4' sheets of material against a specially-designed steel bulkhead. (Standard on Van)



Flexible passenger's seat

The centre seat folds flat and has a lift-up cushion and underseat storage. The outer seat base folds cinema-style so tall items may be carried. (Option on Van)



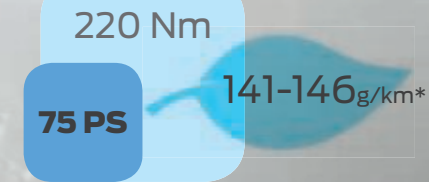
Movable mesh bulkhead

Full mesh bulkhead separates loadspace and passenger space, and offers a choice of configurations to suit your changing needs. (Double Cab-in-Van only)

Choose the engine that's right for you

All options equally tempting.

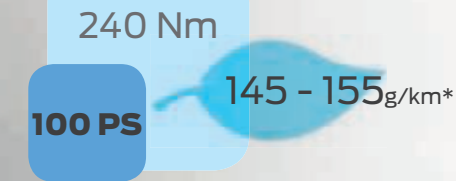
New Transit Connect brings bold design and fuel-efficient engines with all-new 1.5-litre Ford EcoBlue diesels. Combining power, durability and efficiency, it's the ideal partner for your business. What's more, all versions comfortably meet the latest Euro Stage 6.2 emissions regulations, with CO₂ emissions from just 120 g/km[†].



Efficient

1.5L Ford EcoBlue diesel engine

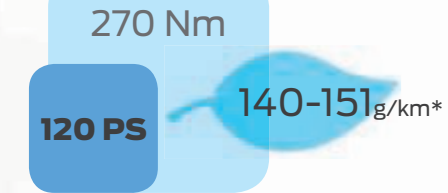
New Transit Connect is available with a choice of advanced high performance Ford EcoBlue diesel engines. All versions combine plenty of pulling power for shifting heavy loads with low running costs.



Balanced

1.5L Ford EcoBlue diesel engine

The new Ford EcoBlue 100 PS (74 kW) diesel engine strikes a great performance balance. It delivers the flexible power needed for long distance driving, coupled with low emissions and excellent fuel consumption.



Powerful

1.5L Ford EcoBlue diesel engine

The new Ford EcoBlue 120 PS (88 kW) diesel engine develops 270 Nm of torque. This makes it the ideal choice for carrying heavy loads and towing, while delivering fuel efficiency from as low as 4.5 L/100 km* combined.

*Calculated Drive Cycle test figures.



Greater performance, fewer emissions.

New Transit Connect's Ford EcoBlue diesel engines comply with stringent Euro Stage 6.2 emissions standards. A Selective Catalytic Reduction (SCR) system uses AdBlue®, a urea/water-based fluid to convert NO_x emissions in the exhaust gas into nitrogen and water, while the diesel particulate filter is designed to capture 99% of emitted solid particulates from the vehicle's exhaust.

[†]Calculated Drive Cycle test figures for Transit Connect Leader with 75 PS Ford EcoBlue diesel engine.



Cost of ownership

Exemplary performance that is surprisingly cost-effective.

Quality and durability are built into new Transit Connect at every step. So, after many years of service, it will feel as good – and drive as beautifully – as it did the day you first took delivery.

Key cost-saving technologies*

- Choice of advanced Ford EcoBlue diesel engines for exceptional fuel economy and low CO₂ emissions
- Auto Start-Stop (standard)
- Shift Indicator (standard)
- Speed Limiter (option)
- Acceleration Control (option on Van with manual transmission)
- 12-year perforation warranty provides reassurance against perforation of the bodywork from the inside of the panel

**Some technologies shown are available on selected models only. Please refer to the specification section for more details.*



Auto Start-Stop

When you stop at traffic lights or your vehicle is idling in a queue, Auto Start-Stop can automatically switch off the engine (while still supplying power to essentials like the headlights, air-conditioning, radio and the Ford SYNC system). When you're ready to move, just depress the clutch and select first gear as usual, or press the accelerator on an automatic, and the system restarts. Auto Start-Stop is particularly effective in city streets, where it can potentially help to reduce fuel consumption and exhaust emissions. (Standard)



Acceleration Control

A unique engine calibration for diesel models with manual transmission, designed to limit acceleration and help reduce fuel consumption when the vehicle is lightly laden. (Option)



Model shown is Trend Connect Trend Van L2 in Chrome Blue metallic body colour (option) and alloy wheels (option).

Ford Easy Fuel capless refuelling system

No dirty fuel caps to touch. Plus, Ford Easy Fuel with its unique safeguard ensures nobody accidentally fills up with the wrong fuel. (Standard)

AdBlue® tank

New Transit Connect's Ford EcoBlue diesel engines are fitted with a selective catalytic reduction system to help reduce exhaust emission levels by injecting diesel exhaust fluid (AdBlue®) into the exhaust system. Ford EcoBlue diesel models have an additional 17-litre AdBlue® tank, with a fascia-mounted warning light indicates when the tank needs to be refilled. (Standard on Ford EcoBlue diesel models)



Driver assistance technologies

Designed to ease your workload on the road.

Combining information from camera and radar technology, new Transit Connect can help in various driving situations. From Intelligent Speed Assist that helps you keep within the speed limit, to Driver Alert that warns you when to take a break, Transit Connect is always ready to lend a hand.

Driver Alert⁰²⁾

Designed to warn you if the system detects driving behaviour that indicates a drop in alertness levels. Initially, a warning icon is displayed in the instrument cluster, followed by an audible chime if driving alertness further declines. (Option as part of a pack)



Cruise control with Adjustable Speed Limiter²⁾

Set your desired speed and the system will maintain the pace until it's deactivated via a button on the steering wheel, or by pressing the clutch or brake pedal. **Adjustable Speed Limiter²⁾** is particularly helpful in towns and cities. It lets you set your chosen maximum speed and the vehicle then stays within that limit so you can keep your eyes on the road. When you need to go faster, just press the accelerator firmly to override the system. (Standard on Sport and Limited, option for other series)

⁰⁾Uses sensors.

¹⁾Speed limit may vary according to road and vehicle size. Driver is responsible for adhering to the speed limit at all times.

²⁾Driver assistance feature.



Distance Indication

An instrument cluster display continuously indicates the distance to the vehicle in front. The system illuminates a system of coloured icons depending on the proximity settings you've chosen. Distance Alert can notify you with a red warning symbol if you get too close to the vehicle ahead. (Option, part of Pre-Collision Assist)



Intelligent Speed Assist⁰²⁾ with Traffic Sign Recognition⁰⁾

Detects speed limits, including variable limits, and no-overtaking signs via the forward-facing camera and shows them in the cluster display. Intelligent Speed Assist uses the information to help you keep within the prevailing speed limit¹⁾. (Option)



Parking made simple

When you need to parallel park, or reverse into a perpendicular space, trust Active Park Assist to help. Simply push a button and the sensors of this innovative system locate a suitable space as you drive past. Then it automatically steers you in, while you operate the accelerator, brake and gears, following the on-screen and audible prompts. It can even help you pull out of a parallel space too. (Option)

Smart parking

Active Park Assist helps you find a space.

And get in. and get out.

Active Park Assist will park your Transit Connect for you. The system can locate a suitable parking space and automatically steer you into a parallel or perpendicular space. It can also manoeuvre you out of parallel spaces too. All you need to do is operate the accelerator, brake and gears. (Option)



Let Transit Connect park itself

Once activated, Active Park Assist can help you find a suitable parking space and will automatically steer you in – and out – as required. (Option)

²⁾Driver assistance feature.



Parking distance sensors, front and rear²⁾

No need to pass by those more challenging parking spaces. An audible warning helps you judge the distance between your vehicle and obstacles at the front and rear, for easier parking and manoeuvring. (Option) (Rear parking sensors standard on Sport and Limited)

Model shown is a Transit Connect Trend van L2 with alloy wheels (option) and rear parking sensors (option).



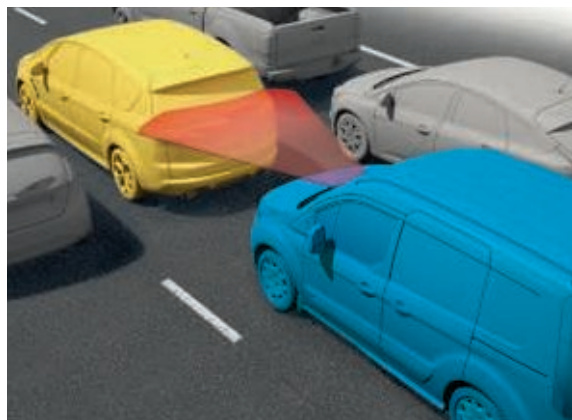
Anticipate

Pre-Collision Assist⁽²⁾ with Active Braking, Pedestrian Detection, Distance Indication and Distance Alert.

The new Transit Connect looks out for you and those around you.

Pre-Collision Assist detects vehicles and pedestrians in the road ahead, or who could cross the vehicle's path, and warns you of their presence.

If a pedestrian steps off the pavement, or a vehicle or cyclist slows down or stops, the system is designed to calculate whether you are taking sufficient action to slow down in time to avoid an accident. If you fail to respond, the system automatically applies the brakes. This technology is designed to help reduce the severity of accidents, or help avoid them altogether, and functions at speeds of up to 80 km/h (50 mph). (Option)



Active Braking⁰

Uses sensors to monitor the road ahead. When it detects a possible collision at speeds of up to 80 km/h (50 mph), it sends you a warning message on the instrument panel. If you don't react, the system can automatically apply the brakes to help you avoid or reduce the severity of a frontal collision. (Option)



Lane-Keeping System (Lane-Keeping Alert and Lane-Keeping Aid)⁽²⁾

Lane-Keeping System uses a forward-looking camera to detect if you're unintentionally drifting out of lane. Lane-Keeping Aid can provide steering torque assistance to help guide you back into the correct lane. Lane-Keeping Alert then warns you by vibrating the steering wheel and displaying a visual warning if you're slow to react or don't respond. The technology is designed for multi-lane roads, such as motorways, and will automatically deactivate at speeds below 65 km/h (43 mph) or can be turned off manually. (Option)

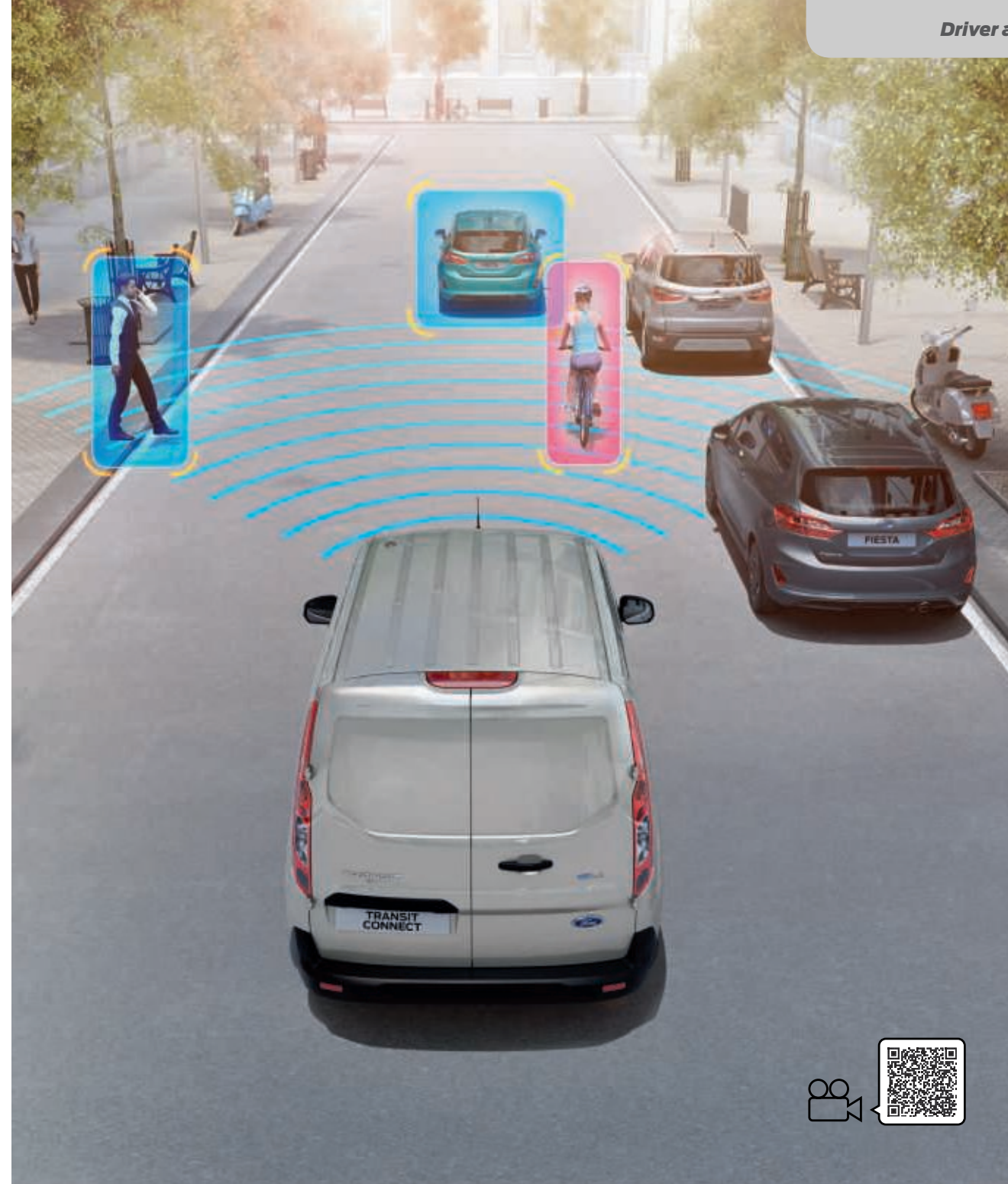


Ford Blind Spot Information System^{(1)†}

As another vehicle – a car, van or lorry – enters your blind spot, it is designed to alert you with a discreet warning light built into the driver's and passenger's door mirrors. (Option on Trend, Sport and Limited)

Pre-Collision Assist⁽¹⁾⁽²⁾ with Pedestrian Detection

Monitors your proximity to other vehicles and pedestrians, and can alert you to a potential collision. (Option, and included with Adaptive Cruise Control)



Side Wind Stabilisation⁽¹⁾

Helps you to stay in lane in strong, gusty conditions by using the ESC system to sense when the vehicle is being affected by crosswinds. (Option)



⁰Uses sensors.
¹Safety feature. ²Driver assistance feature.
[†]Designed to operate at speeds above 10 km/h.



Trailer Sway Control^①

When it detects trailer sway, the system is designed to reduce engine torque and apply the brakes to the appropriate wheel(s) to help maintain control. (Standard, but activated with optional Ford trailer tow attachment)

Be confident

All-round protection for peace of mind.

1. Electronic Stability Control (ESC)^①

ESC^① is designed to help you maintain control in extreme driving conditions. It senses when you are deviating from your chosen line and aims to keep you on track by automatically regulating braking and engine output. (Standard)

2. Emergency Brake Assist^①

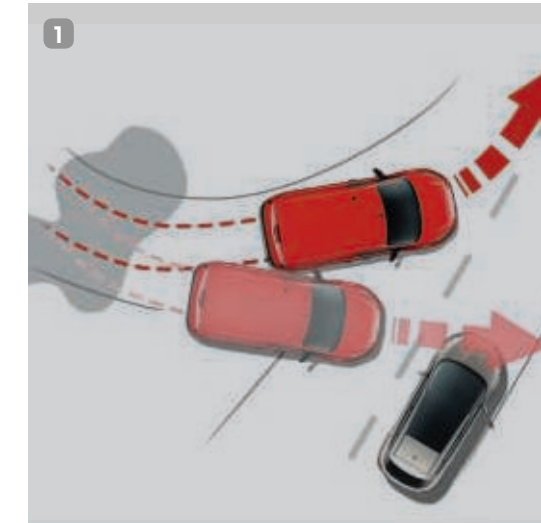
Designed to recognise an emergency braking situation and increases the pressure within the braking system to provide optimum stopping power. (Standard)

3. Load Adaptive Control^①

Designed to adjust the responses of the ESC^① system to compensate when the vehicle is unladen, partially- or fully-laden. (Standard)

4. Occupant safety

Driver and passenger* front airbags with seat-mounted side, head and thorax airbags and side curtain airbags^①. (Driver's airbag standard, all other airbags optional)



^①Uses sensors.

^①Safety feature.

***Note: A rear-facing child seat should never be placed in the front passenger seat when the Ford vehicle is equipped with an operational front passenger's airbag.**

Features to make your life easier



1. FordPass Connect modem

FordPass Connect and the FordPass App deliver a suite of connected services in your van and via your smartphone. The new FordPass Connect modem* makes your journeys easier. Live Traffic** delivers up-to-date traffic information to your SYNC 3 Navigation system. The on-board Wi-Fi allows you and your passengers to connect effortlessly to the internet with up to ten devices***. (Standard from June 2020 production, Optional on prior production)

Download the FordPass App so that you can control a host of new features from your smartphone. Remotely lock and unlock your van, monitor your fuel level, tyre pressures and find your way back to your parked van on a map.

2. Ford Power starter button

Start the engine at the press of a button. Just keep the key fob with you in your pocket or bag. (Standard on Sport and Limited)

3. 230 V power socket

A handy 150 Watt 230 V power socket, located between the driver's and passenger seats, can be used to charge tools, laptops or other electrical equipment without the need for special adaptors. (Option, not available on DCiV)

4. Automatic transmission

The 120 PS Ford EcoBlue diesel engine is available with a new 8-speed automatic transmission, making Transit Connect even easier and more relaxing to drive. (Option)

5. Xenon headlights with static cornering lights and LED daytime running lights

Transit Connect's new xenon headlights offer enhanced light quality over halogen bulbs, while using less energy. Static cornering lights, mounted in each headlight, illuminate corners during turns. Whenever outside light levels dictate, automatic headlights switch on to help keep the road ahead well lit. (Option on Trend, Sport and Limited, not available on Base)

*FordPass Connect is an optional extra until June 2020 production. The on-board modem will be connected at the time of vehicle delivery. You may choose to opt in/opt out of certain data sharing.

**Live Traffic updates and certain FordPass Connect features are complementary for initial trial periods, after which subscription charges apply'

***Wi-Fi hotspot (up to 4G LTE) includes complimentary wireless data trial that begins at time of activation and expires at the end of 3 months or when 3GB of data is used, whichever comes first.

Model shown is a Transit Connect Limited L2 van with Xenon headlights (option).



Leader

Exterior features

- 16" steel wheels painted Shadow Silver
- Kerbside load door
- Ford Easy Fuel capless refuelling system
- Remote central locking

Interior features

- Radio with MP3 capability, DAB, Bluetooth® and USB connectivity, steering wheel remote audio controls and two speakers
- Electrically-operated front windows with one-shot down on driver's side
- Rake and reach adjustable steering wheel
- Trip computer
- Single passenger seat
- 12-volt AUX power point
- Dual cup holders
- Instrument panel stowage box
- DIN-compliant cargo tie-down hooks
- DIN-compliant full width steel bulkhead
- Overhead stowage



Bodystyles

- Van
- Double Cab-in-Van

Engines

- 1.5 Ford EcoBlue diesel 75 PS (55 kW) – Van/DCiV
- 1.5 Ford EcoBlue diesel 100 PS (74 kW) – Van/DCiV

Model shown is a Ford Transit Connect Leader in Magnetic metallic body colour (option).

Note The Bluetooth® word mark and logos are owned by the Bluetooth SIG, Inc. and any use of such marks by Ford Motor Company Limited and its associated companies is under licence. Other trademarks and trade names are those of their respective owners.

Trend

Exterior features in addition to Leader

- 16" steel wheels with full wheel covers
- Body colour front bumper
- Body colour rear bumper end caps
- Front fog lights
- Electrically-operated and heated door mirrors
- Quickclear heated windscreen and washer jets

Interior features in addition to Leader

- DAB radio, 4.2" TFT display radio including message centre, four speakers, AUX and MP3 capability, Bluetooth® and Voice Control and audible text messaging, USB and Privacy mode
- Front interior light with two map-reading lights



Series overview Trend 26-27

Bodystyles

- Van
- Double Cab-in-Van

Engines

- 1.5 Ford EcoBlue diesel 120 PS (88 kW) – Van/DCiV



Front fog lights
(Standard)



Quickclear heated windscreen
(Standard)

Note The Bluetooth® word mark and logos are owned by the Bluetooth SIG, Inc. and any use of such marks by Ford Motor Company Limited and its associated companies is under licence. Other trademarks and trade names are those of their respective owners.

Model shown is a Ford Transit Connect Trend in Dark Carmine Red metallic body colour (option).

Limited

Exterior features in addition to Trend

- 16" 5x2-spoke alloy wheels, painted Sparkle Silver
- Body colour bodyside mouldings, door handles and door mirrors
- Automatic headlights and rain-sensing wipers
- Rear parking distance sensors
- Static cornering fog lights
- Chrome strip in the upper front grille

Interior features in addition to Trend

- Manual air conditioning
- Cruise control with Adjustable Speed Limiter
- Heated driver's seat
- Ford Power starter button
- Door handles with chrome finish
- 4-spoke leather-trimmed multifunction steering wheel



Bodystyle

- Van

Engines

- 1.5 Ford EcoBlue diesel 120 PS (88 kW)
– Van



Leather-trimmed multifunction steering wheel
(Standard)



16" 5x2-spoke alloy wheel, painted Sparkle Silver
(Standard)

Sport

Exterior features in addition to Trend

- 16" 5-spoke alloy wheels, painted Dark Stainless
- Body colour rear bumper, bodyside mouldings, door handles and door mirrors
- Full front and rear body styling kits
- Rear bumper moulding
- Sport stripe kit front, rear and sides
- Rear parking distance sensors
- Automatic headlights and rain-sensing wipers
- Front fog lights with static cornering lights
- Aluminium roof rails

Interior features in addition to Trend

- Radio, 4.2" screen, Bluetooth® and Voice Control
- Dual-zone Electronic Automatic Temperature Control (DEATC) air conditioning
- Door handles with chrome finish
- 4-spoke leather-trimmed steering wheel



Bodystyle

- Van

Engine

- 1.5 Ford EcoBlue diesel 120 PS (88 kW) – Van



16" 5-spoke alloy wheel, painted Dark Stainless
(Standard)



Partial leather seat trim
(Standard)

Model shown is a Ford Transit Connect Sport in Chrome Blue metallic body colour (option).

Note MotorThe Bluetooth® word mark and logos are owned by the Bluetooth SIG, Inc. and any use of such marks by Ford Motor Company Limited and its associated companies is under licence. Other trademarks and trade names are those of their respective owners.

Colour and trim

Choose the colour and trim that best reflects your business brand.

1. Leader

Insert: Racer in Dark Palazzo Grey
Bolster: City Fabric in Ebony

2. Leader

Insert: Crosshatch in Dark Palazzo Grey
Bolster: Salerno Vinyl in Ebony

3. Trend

Insert: Capitol in Ebony
Bolster: City Fabric in Ebony

4. Limited

Insert: Ligne in Dark Palazzo Grey
Bolster: Marl/City Fabric in Ebony

5. Sport

Insert: Dynamo in Ebony
Bolster: Salerno in Ebony

12-year perforation warranty

The Transit Connect owes its durable exterior to a thorough multi-stage painting process. From the wax-injected steel body sections to the hard-wearing top coat Transit Connect will retain its good looks for many years to come.



Frozen White
Solid body colour



Blazer Blue
Solid body colour



Race Red
Solid body colour



Dark Carmine Red
Metallic body colour*



Moondust Silver
Metallic body colour*



Chrome Blue
Metallic body colour*



Diffused Silver
Metallic body colour*



Magnetic
Metallic body colour*



Agate Black
Mica Body Colour*



Note The images used are to illustrate body colours only and may not reflect the vehicle described. Colours and trims reproduced within this brochure may vary from the actual colours, due to the limitations of the printing processes used.
*Metallic and mica body colours are options, at extra cost.

Personalise

Alloy wheels

A choice of 16" alloy wheel styles are available with locking wheel nuts.

Q-Top® (Q-Tech) roof gallery

Easily enhance the load capacity of your Ford. The heavy-duty roof gallery is designed to carry a wide variety of bulky cargo. (Accessory)

Q-Top® (Q-Tech) ladder roller for Q-Top® (Q-Tech) roof gallery

The ladder roller makes loading and unloading your ladder easier when transporting it on your Q-Top® roof gallery. (Accessory)

Base roof carrier, lockable

A roof carrier is the base for various roof transportation attachments. The roof carrier can be extended with a fourth bar for L2 models. (Accessory)



Thule® Professional roof attachments

A range of roof attachments is available, including modular attachments, such as (sliding) ladder holder, load stops, roller, eye bolt and ratchet tie-down. (Accessories)

Rear window protection guard

Helps prevent interior and exterior damage, without obscuring the driver's view out of the rear window. (Option and Accessory)

Rear ladder

Provides easy access to the roof for convenient access to your roof load. (Accessory)

ClimAir® wind deflectors

Gives you a more comfortable drive with the front windows open, even during light rain. (Accessory)

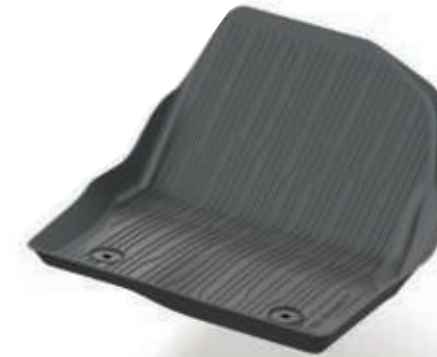
Xvision+ parking distance sensors

Make difficult manoeuvres easy with Xvision parking distance sensors. An audible warning helps you to judge parking distances. (Accessory)

Bosch® reverse warning device

Designed with safety in mind, this reverse warning device helps to alert pedestrians with an acoustic signal when you are reversing. (Accessory)

Note Technical information for vehicle converters can be found online via the Body and Equipment Mounting Manual at www.etis.ford.com; go to >information > >vehicle conversions.



Rubber floor mats

Tray style rubberised all-weather floor mats are tailor-made to fit and help to protect against dirt and damp. The driver's mat is securely fixed directly onto the vehicle's floor to help prevent it from slipping. (Accessory)



Tow bar, fixed or detachable

Providing extra transport and stowage capability. Both a fixed and detachable tow bar are available. The tow bar can tow up to 1500 kg* depending on engine (check with your Ford Dealer for further details).

*Towing and load capacity depends on engine and vehicle series, please refer to vehicle weight and load specifications.



Mud flaps

Contoured mud flaps help to protect the bodywork of your Transit Connect from stone chips and road spray. (excludes Sport Van).

†Item covered by third party supplier's warranty, please see back cover for details.
For more information and to view the full range accessories visit www.ford-accessories.ie
Fitment of accessories may have an impact on your vehicle's fuel consumption.
For a range of Ford branded merchandise – visit www.fordlifestylecollection.com



Further information on our full range of available accessories can be found here

Keep your business moving.

Ford Service

Discover the valuable benefits of a Ford Service.

Designed to keep you on the road and your running costs low, a Ford Service is delivered by the experts and available exclusively through our dealer network.



Features of Ford Service:

- Genuine Ford parts quality
- Ford-trained technicians
- Speedy and accurate Ford diagnostics
- Free Video Check
- Electronic Vehicle Health Check (eCheck)
- Collection and delivery**
- Interim checks for optimum vehicle performance
- Unscheduled repairs
- Priority treatment for urgent repairs
- Free Pan-European Roadside Assistance

Efficiency, accuracy and convenience are at the heart of the Ford service promise. So, whether it's servicing, maintenance or repair you need, be sure to come and see us.

For more information and to find your nearest participating Ford Service centre, visit the aftersales support section at www.ford.ie

Commercial Vehicle Finance

When it comes to financing your Ford Commercial Vehicle, our size and expertise means we're well placed to provide you with a wide range of finance products. Ford Credit provides a range of finance products for your vehicle as a business user. For more information about the finance products provided by Ford Credit visit www.ford.ie

The credit provider of these products is Bank of Ireland Leasing Limited, trading as Ford Credit. The FORD and FORD CREDIT trademarks are owned by the Ford Motor Company and its affiliates are used under license.

Lending criteria and terms and conditions apply. Applicants must be aged 18 or over. The information is for illustrative purposes only and does not constitute an offer.

Warning: You may have to pay charges if you repay early, in full or in part, a fixed rate credit facility.

FORD PROTECT

Extend your warranty up to 7 years with Ford Protect.

Extend your standard 2-year warranty and enjoy worry-free motoring for many years to come. Ford Protect provides a range of key benefits including:

- High flexibility in duration and mileage
- Attractive annual fees
- Protection on trips abroad
- Inflation proof: all increases in repair costs are covered
- Prolonged lifespan of your Ford vehicle
- Protects your vehicle resale value

Connect series dimensions

Van



Double Cab-in-Van

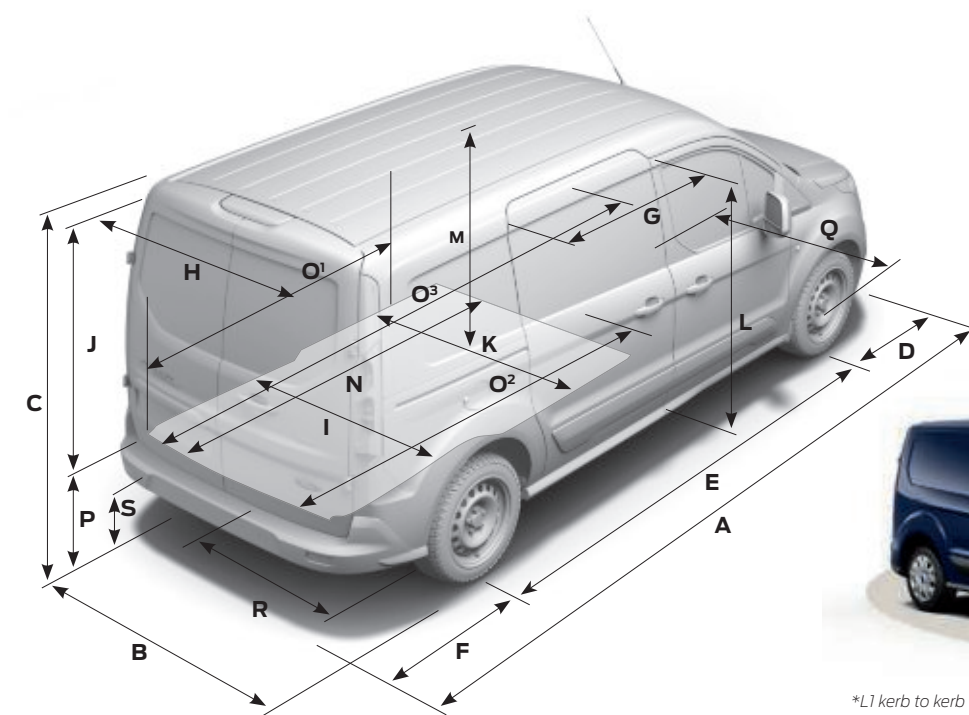


Note: DCiV loadcube shown with 2nd row bulkhead fitted.

	Transit Connect L1	Transit Connect L2	Transit Connect DCiV (Crew Van) L1	Transit Connect (Crew Van) L2
A Overall length	4425	4825	4425	4825
B Overall width (no mirrors)	1835	1835	1835	1835
B Overall width (mirrors folded)	1967	1967	1967	1967
B Overall width (mirrors unfolded)	2137	2137	2137	2137
C Overall height (unladen)	1830	1828	1819	1820
D Front overhang	885	885	885	885
E Wheelbase	2662	3062	2662	3062
F Rear overhang	878	878	878	878
G Side door entry width	612	839	612	839
G Side door entry width (Van with bulkhead)	433	660	-	-
H Rear door opening width below belt	1248	1248	1248	1248
I Loadspace width between wheel arches	1249	1249	1193	1193
J Rear door opening height (at vehicle centreline)	1202	1156	1150	1154
K Max Loadspace width at floor	1543	1496	1533	1496
L Side door opening height	1228	1228	1228	1228
M Loadspace floor to roof	1269	1269	1237	1267
N Loadspace length maximum to bulkhead (DCiV with Bulkhead behind 2nd row seats)	1786	2152	861	1061
O¹ Loadspace length (with bulkhead, laden to belt line)	1558	1958	-	-
O² Loadspace length (back of front seat, at floor)	1831	2231	-	-
O³ Loadspace length (max, with load through bulkhead)	3000	3400	-	-
P Loading height (unladen)	599	599	593	586
Q Front track	1568	1568	1568	1568
R Rear track	1582	1582	1582	1582
S Ground clearance	148	149	144	144
Capacity				
Cargo volume behind bulkhead (VDA/SAE)	2.6/2.9 cu.m	3.2/3.6 cu.m	-/1.2 cu.m	-/1.6 cu.m
Cargo volume less bulkhead (SAE)	3.0 cu.m	3.7 cu.m	-	-
Cargo volume less bulkhead, with front seat folded (SAE)	3.7 cu.m	4.4 cu.m	-	-

	Transit Connect L1	Transit Connect L2	Transit Connect DCiV (Crew Van) L1	Transit Connect (Crew Van) L2
Turning circle (m)				
Kerb to kerb	11.0	12.2	11.0	12.2
Wall to wall	11.7	12.5	11.7	12.5
Additional information				
Interior – Front				
Effective headroom	1190	1190	1190	1190
Maximum effective leg room	1027	1027	1074	1074
Shoulder room	1464	1464	1464	1464
Hip room	1376	1376	1376	1376

L1 = Short wheelbase, L2 = Long wheelbase. All dimensions shown in mm are subject to manufacturing tolerances and refer to minimum specification models and do not include additional equipment. These illustrations are for guidance only. Dimensions may vary dependent on the model and equipment fitted.



*L1 kerb to kerb turning circle. 12.2 m L2 models.

Get the most from your new Ford

We want to help you get the most from your new Ford. And to do that, you need to know how much it is designed to carry safely, both in terms of payload and load volume. Your Ford Commercial Vehicle Dealer can provide professional advice on important specification aspects, and help to find the right van for your budget and business needs.

The Ford Transit Connect is designed to carry cargo – and lots of it

Choosing a new van is an important decision with lots of factors to be considered. While some aspects, like selecting the most appropriate derivative, identifying the intended primary use and determining loadspace compartment size are relatively simple, others, such as calculating payload are more complex.

Payload capacity

To calculate payload, you need to know two things: the vehicle's gross vehicle mass (GVM) and its kerb mass.

Gross Vehicle Mass (GVM)

GVM is the maximum permissible weight of the vehicle when loaded and ready to go – that includes the weight of the vehicle itself, ancillaries, driver and crew (assuming the industry standard weight of 75 kg/person), fluids, fuel tank 90% full (1 litre of diesel = approximately 0.85 kg), optional and aftermarket equipment, and cargo.

Kerb mass

Kerb mass is the weight of a standard-specification Base series vehicle, including fluids and fuel tank 90% full, but without the driver, crew or cargo. If you intend to load the vehicle close to its maximum capacity, it is recommended that you add a margin for error of 5% of the kerb mass to the kerb mass figure before calculating payload, to reduce the risk of overloading.

Payload is the difference between the two.

Gross vehicle mass minus kerb mass = payload

So, to help you choose the right vehicle for your needs, here are some more detailed explanations about the factors that can influence a vehicle's payload. These include, but are not limited to:

Driver and crew

We calculate the weight of the driver and crew based on the industry-standard weight of 75 kg/person. Remember that the driver and crew are not included in the kerb mass figure, so when a driver or crew boards the vehicle, its payload will be reduced accordingly.

Factory-fitted options

Most factory-fitted options will affect a vehicle's payload. For example, air conditioning can add approximately 13 kg to a vehicle's weight, and therefore reduce its payload accordingly.

Series

All kerb masses quoted in this brochure are for standard-specification Base series models. Trend series models will generally weigh more than Base series due to the increased level of features and equipment.

Manufacturing tolerances

Variations in manufacturing and production processes mean that no two vehicles are likely to weigh exactly the same. It must be noted that actual weight will always be subject to manufacturing tolerances which may result in payload variations between the figures in this brochure and actual weight. NB: It is the responsibility of the vehicle operator to ensure their vehicles are legally compliant for road use.

Accessories and aftermarket conversions

It is important to think carefully about what to do with your vehicle after you take delivery. Any accessories fitted or aftermarket conversions to the vehicle may adversely affect its payload. Please speak to your Ford Commercial Vehicle Dealer for more information and advice.

If payload is critical to your business, or if you plan to carry cargo at, or close to, the vehicle's maximum capacity, your Ford Commercial Vehicle Dealer can help. Using their specialist expertise and knowledge, they can advise you on the exact specification of vehicle required to meet your individual business needs.

Configure your van to suit your job

Ford Commercial Vehicles are available with a wide range of standard and optional features. Your Ford Commercial Vehicle Dealer can help you ensure that you specify the right vehicle features for your specific business needs, including technical items to aid aftermarket fitment of specialist equipment or conversion.

Weights, Loads and Fuel Efficiency

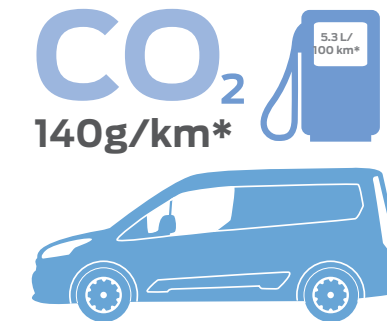
Reality check. Making fuel economy figures more realistic.

The test used to establish fuel consumption and CO₂ figures has changed to deliver results that are more representative of real driving. The Worldwide Harmonised Light Vehicle Test Procedure (WLTP) has replaced the old NEDC test. The Fuel Consumption and CO₂ figures shown are derived from the new WLTP test. This will produce more accurate figures which most likely will be greater than those arrived at using the NEDC test. Please be mindful of this in making comparisons between vehicles where some manufacturers may still display the old NEDC figures. It should be noted that vehicle registration tax (VRT) and where applicable motor tax is not based on these WLTP figures in 2020, these figures are for information purposes only. For further information please visit <https://www.ford.ie/owner/resources-and-support/fuel-economy>

Understanding fuel data - The table below shows the fuel consumption (WLTP) and CO₂ emissions (WLTP) for each available engine when fitted on a standard specification Transit Courier (with no options or accessories). Adding options or accessories to your chosen vehicle can impact WLTP fuels consumption and CO₂ emissions. Please speak to your Ford Dealer for more information.

	Fuel	Transmission	Gross payload (kg) ^{1a}	Gross vehicle mass (kg)	Kerb mass – excluding driver (kg) ²	Front axle kerb mass (kg)	Rear axle kerb mass (kg)	Axle ratio ^{3a}	Max. GTM (kg) with quoted axle ratio	Trailer plate (kg) Braked (unbraked)	CO ₂ emissions	Fuel consumption WLTP(L/100km) ^{3b,c}
200 L1 Transit Connect												
Leader 1.5 Ford EcoBlue 75 PS (55 kW)	Diesel	6-speed manual	651	2155	1504	888	616	3.68	3350	1200 (750)	142	5.4
Leader 1.5 Ford EcoBlue 100 PS (74 kW)	Diesel	6-speed manual	656	2160	1504	888	616	3.52	3500	1350 (750)	145	5.5
Limited 1.5 Ford EcoBlue 120 PS (88 kW)	Diesel	6-speed manual	718	2245	1528	900	628	3.68	3590	1500 (750)	141	5.4
Sport 1.5 Ford Ecoblue 120PS (88kW)	Diesel	6-speed manual	705	2225	1520	915	605	3.68	3590	1500 (750)	142	5.4
220 L1 Transit Connect High Payload												
Trend 1.5 Ford EcoBlue 120 PS (88 kW)	Diesel	6-speed manual	863	2385	1522	886	636	3.68	3590	1500 (750)	140	5.3
210 L2 Transit Connect												
Leader 1.5 Ford EcoBlue 75 PS (55 kW)	Diesel	6-speed manual	684	2260	1576	936	640	3.68	3350	1200(750)	144	5.5
Leader 1.5 Ford EcoBlue 100 PS (74 kW)	Diesel	6-speed manual	690	2255	1565	931	634	3.68	3500	1350(750)	147	5.6

*WLTP combined fuel consumption and CO₂ emissions for Trend L1 Van (N1) with 1.5L Ford EcoBlue 120 PS, Auto Start-Stop and 100 km/h speed limiter.



L1 = Short wheelbase, **L2** = Long wheelbase. **Note:** All diesel engines include Diesel Particulate Filter (cDPF). **Kerb mass** = The weight of the complete vehicle and all equipment including 90% fuel and water, but without the payload, driver or any passengers. **GVM** = Gross vehicle mass, the total permissible all-up weight of a vehicle – i.e. with body, payload, ancillaries, fuel, oil, water, driver and passengers. **GTM** = Gross train mass, the total permissible all-up weight of a vehicle (see GVM) together with its trailer and load. **Gross Payload** = Gross vehicle mass less kerb mass. All kerb masses quoted in this brochure are for models with minimum equipment. Any additional options specified on the vehicle will reduce the payload accordingly. It must be noted that actual weight will always be subject to manufacturing tolerances which may result in payload variations between this table of figures and actual weight. NB: It is the responsibility of the vehicle operator to ensure their vehicles are legally compliant for road use.

^{3a}The declared fuel consumptions and CO₂ emissions for Stage 6 Light Duty Truck engines are measured according to the technical requirements and specifications of European Regulation (EC) 715/2007 and latest amendment. Fuel consumption and CO₂ emissions are specified for a vehicle variant and not for a single car. The applied standard test procedure enables a comparison between different vehicle types; the specification and options selected may have an effect i.e. on vehicle weight and therefore on the emissions and fuel economy of the vehicle and also may influence the figures that appear in the individual vehicle documentation. This information is not part of any product offer made. Real world fuel consumption can vary as the fuel efficiency of a vehicle is influenced by (individual) vehicle configurations, driving behaviour, use of technical equipment such as air conditioning, as well as other non-technical factors.

Weights, loads & Fuel Efficiency

	Fuel	Transmission	Gross payload (kg) ^o	Gross vehicle mass (kg)	Kerb mass – excluding driver (kg) [♦]	Front axle kerb mass (kg)	Rear axle kerb mass (kg)	Axle ratio ^o	Max. GTM (kg) with quoted axle ratio	Trailer plate (kg) Braked (unbraked)	CO ₂ emissions	Fuel consumption WLTP(L/100km) ^o ^o
											Combined	
240 L2 Transit Connect High Payload												
Trend 1.5 Ford EcoBlue 120 PS (88 kW)	Diesel	6-speed manual	805	2405	1600	944	656	3.68	3590	1500 (750)	143	5.5
Trend 1.5 Ford EcoBlue 120 PS (88 kW)	Diesel	8-speed automatic	770	2380	1610	971	639	3.80	3540	1500 (750)	166	6.3
Limited 1.5 Ford EcoBlue 120 PS (88 kW)	Diesel	6-speed manual	675	2275	1600	952	648	3.68	3590	1500 (750)	145	5.5
Sport 1.5 Ford EcoBlue 120 PS (88 kW)	Diesel	6-speed manual	669	2270	1601	966	635	3.68	3590	1500 (750)	146	5.6
230 L2 Transit Connect Double Cab-in-van (Crew van)												
Leader 1.5 Ford EcoBlue 100 PS (74 kW)	Diesel	6-speed manual	738	2400	1662	976	686	3.68	3500	1350 (750)	151	5.7
Trend 1.5 Ford EcoBlue 100 PS (88 kW)	Diesel	6-speed manual	739	2405	1666	979	687	3.68	3500	1495 (750)	151	5.7

L1 = Short wheelbase, **L2** = Long wheelbase. **Note:** All diesel engines include Diesel Particulate Filter (cDPF). **Kerb mass** = The weight of the complete vehicle and all equipment including 90% fuel and water, but without the payload, driver or any passengers. **GVM** = Gross vehicle mass, the total permissible all-up weight of a vehicle – i.e. with body, payload, ancillaries, fuel, oil, water, driver and passengers. **GTM** = Gross train mass, the total permissible all-up weight of a vehicle (see GVM) together with its trailer and load. **oGross Payload** = Gross vehicle mass less kerb mass. All kerb masses quoted in this brochure are for models with minimum equipment. Any additional options specified on the vehicle will reduce the payload accordingly. It must be noted that actual weight will always be subject to manufacturing tolerances which may result in payload variations between this table of figures and actual weight. NB: It is the responsibility of the vehicle operator to ensure their vehicles are legally compliant for road use.

^oThe declared fuel consumptions and CO₂ emissions for Stage 6 Light Duty Truck engines are measured according to the technical requirements and specifications of European Regulation (EC) 715/2007 and latest amendment. Fuel consumption and CO₂ emissions are specified for a vehicle variant and not for a single car. The applied standard test procedure enables a comparison between different vehicle types; the specification and options selected may have an effect i.e. on vehicle weight and therefore on the emissions and fuel economy of the vehicle and also may influence the figures that appear in the individual vehicle documentation. This information is not part of any product offer made. Real world fuel consumption can vary as the fuel efficiency of a vehicle is influenced by (individual) vehicle configurations, driving behaviour, use of technical equipment such as air conditioning, as well as other non-technical factors.

Engine data

	Transmission	Engine technical features	Maximum power ^o	Maximum torque ^o
1.5 75 PS Ford EcoBlue (55 kW) Diesel Emissions standard Euro 6d TEMP-EVAP-ISC	6-speed manual	4 cylinders in line, DOHC, 16 valves, aluminium cylinder block with open deck, direct injection via solenoid injectors, common rail 3rd generation fuel injection system, fixed geometry turbocharger with intercooler, variable displacement oil pump, thermal override, 'split' sump, electronic actuator and controllable water cooled charge air cooler	75 PS (55 kW)	220 Nm (1750-2000)
1.5 100 PS Ford EcoBlue (74 kW) Diesel Emissions standard Euro 6d TEMP-EVAP-ISC	6-speed manual	4 cylinders in line, DOHC, 16 valves, aluminium cylinder block with open deck, direct injection via solenoid injectors, common rail 3rd generation fuel injection system, fixed geometry turbocharger with intercooler, variable displacement oil pump, thermal override, 'split' sump, electronic actuator and controllable water cooled charge air cooler	100 PS (74 kW)	240 Nm (2000-2500)
1.5 120 PS Ford EcoBlue (88 kW) Diesel Emissions standard Euro 6d TEMP-EVAP-ISC	6-speed manual	4 cylinders in line, DOHC, 16 valves, aluminium cylinder block with open deck, direct injection via solenoid injectors, common rail 3rd generation fuel injection system, fixed geometry turbocharger with intercooler, variable displacement oil pump, thermal override, 'split' sump, electronic actuator and controllable water cooled charge air cooler	120 PS (88 kW)	270 Nm (1750-2000)
1.5 120 PS Ford EcoBlue (88 kW) Diesel Emissions standard Euro 6d TEMP-EVAP-ISC	8-speed automatic	4 cylinders in line, DOHC, 16 valves, aluminium cylinder block with open deck, direct injection via solenoid injectors, common rail 3rd generation fuel injection system, fixed geometry turbocharger with intercooler, variable displacement oil pump, thermal override, 'split' sump, electronic actuator and controllable water cooled charge air cooler	120 PS (88 kW)	270 Nm (1750-2000)

^oTested in accordance with ISO 1585. **Note** all diesel engines are fitted with a standard cDPF (coated diesel particulate filter).

Model availability

	Transmission	L1					L2						
		Leader	Leader High Payload	Trend	Trend High Payload	Limited	Sport	Leader	Leader High Payload	Trend	Trend High Payload	Limited	Sport
Ford Transit Connect Van													
1.5 TDCi EcoBlue 75 PS (55 kW)	6-speed manual	●	-	-	-	-	-	●	-	-	-	-	-
1.5 TDCi EcoBlue 100 PS (74 kW)	6-speed manual	●	-	-	-	-	-	●	-	-	-	-	-
1.5 TDCi EcoBlue 120 PS (88 kW)	6-speed manual	-	-	-	●	●	●	-	-	-	●	●	●
1.5 TDCi EcoBlue 120 PS (88 kW)	8-speed automatic	-	-	-	-	-	-	-	-	-	●	-	-
Ford Transit Connect Double Cab in Van (DCIV)													
1.5 TDCi EcoBlue 100 PS (74 kW)	6-speed manual	-	-	-	-	-	-	●	-	●	-	-	-

● = Available **Note:** All diesel engines are fitted with a standard cDPF (catalysed diesel particulate filter). **L1** = Short wheelbase, **L2** = Long wheelbase.

Styling and appearance

	Van				DCIV	
	Leader	Trend	Limited	Sport	Leader	Trend
Wheels						
Steel wheels – 16"x 6½" (fitted with 205/60 tyres)	●	-	-	-	●/-	-
Steel wheel – 16"x 6½" painted Sparkle Silver wheel covers (fitted with 205/60 tyres) (only available with manual transmission on DCIV)	-	●	-	-	-	●/-
Alloy Wheel – 16"x6½" painted Sparkle Silver (fitted with 205/60 tyres)	-	○	●	-	□/●	-/●
Alloy Wheel – 16"x6½" painted Dark Stainless (fitted with 205/60 tyres)	-	-	-	●	-	-
Steel spare wheel	●	●	●	○	-	-
Steel spare wheel with 16" Alloy Wheels	-	-	-	-	○	-
Delete spare wheel	○	○	○	●	●	●
Tyre repair kit (comes when delete spare wheel is either standard or selected as an option)	○	○	○	●	●	●
All Weather tyres (not available on DCIV L2 Leader or L1/L2 Trend with automatic transmission)	○	○	○	-	○/-	○/-
Tyre Pressure Monitoring System (TPMS)	○	○	○	○	○	○
Design features						
Sports Styling Pack – Contains front and rear sports stripes, roof rails, front and rear lower spoiler and chromed rear bumper moulding	-	-	-	●	-	-
Front bumper – Self colour (on Trend series only in conjunction with SVO paint)	●	-	-	-	●	-
Front bumper – Body colour	-	●	●	●	-	●

Styling and appearance

	Van				DCIV	
	Leader	Trend	Limited	Sport	Leader	Trend
Rear bumper – Self colour	●	●	●	-	●	●
Rear bumper moulding – Chrome	-	-	-	●	-	-
Rear bumper end caps – Self colour	●	-	-	-	●	-
Rear bumper end caps – Body colour	-	●	●	●	-	●
Exterior door handles – Self colour	●	●	-	-	●	●
Exterior door handles – Body colour	-	-	●	●	-	-
Cargo door/liftgate handle – Self colour	●	●	-	-	●	●
Cargo door/liftgate handle – Body colour	-	-	●	●	-	-
Front grille – Self colour	●	●	●	●	●	●
Wide bodyside moulding – Self colour	●	●	-	-	●	●
Wide bodyside moulding – Body colour	-	-	●	●	-	-
Front lip spoiler (not available with petrol engines)	●	●	●	●	●	●
Mudflaps – Front with Rear Wheel Arch Air Deflectors	○	○	○	●	○	○
Roof rails (L1 only on DCIV)	○	○	○	●	○	○
Roof rails and cross bars (L1 only on DCIV)	-	-	-	-	○	○
Interior door handle – Black	●	●	-	-	●	●
Interior door handle – Chrome finish	-	-	●	●	-	-

● = Standard, ○ = Option, at extra cost, □ = Part of an option pack, at extra cost.

Tyre Pressure Monitoring System (TPMS) (Option)



Driving experience

	Van			Sport	DCiV	
	Leader	Trend	Limited		Leader	Trend
Driver Assistance						
Parking distance sensors – Rear	○/□	○/□	●	●	○/□	○/□
Parking distance sensors – Front	○/□	○/□	○/□	○/□	□	○/□
Rear-view camera in mirror display	○	○	○	○	○	○
Rear-view camera in audio screen display (included with SYNC 3 ICE packs)	□	□	□	□	□	□
Active Park Assist (includes front and rear parking sensors). Must be ordered with ICE pack 9,10 or 154 on Leader series	○	○	○	○	○	○
Ford Power starter button	-	-	●	●	-	-
Electric power-assisted steering (EPAS)	●	●	●	●	●	●
Hill Start Assist	●	●	●	●	●	●
Lane-Keeping Aid (includes Driver Impairment Monitor, Cross Traffic Alert, Auto High Beam, Traffic Sign Recognition, Rain-sensing wipers and Quickclear heated windscreen)	○/□	○/□	○/□	○/□	○/□	○/□
Pre-Collision Assist with Active Braking and Pedestrian Detection	○	○	○	○	○	○
Pre-collision Assist with Active Braking and Pedestrian Detection. Includes Lane-Keeping Aid	○/□	○/□	○/□	○/□	○/□	○/□
Blind Spot Information System (BLIS) includes Cross Traffic Alert	○	○	○	○	-	-
Cruise control with Adjustable Speed Limiter	○/□	○/□	●	●	○/□	○/□
Adaptive Cruise Control with Intelligent Speed Assist, Traffic Sign Recognition and Pre-Collision Assist with pedestrian and cyclist recognition and Active Braking. Adds Leather Steering wheel where not present	○	○	○	○	○	○
Intelligent Speed Assist with Cruise Control and Traffic Sign Recognition	○	○	○	○	○	○
Traffic Speed Sign Recognition	□	□	□	□	□	□
Trailer Sway Control	□	□	□	□	□	□
Speed Limiter – 56 mph/90 km/h	○	○	○	○	○	○
Speed Limiter – 62 mph/100 km/h	○	○	○	○	○	○
Speed Limiter – 70mph/130 km/h	○	○	○	-	○	○
Exterior Lighting						
Fog lights – Front	-	●	-	-	-	●
Fog lights – Static cornering lights	○	○	●	●	-	○
Fog lights – Rear	●	●	●	●	●	●
Headlights – Halogen, side lights, rear fog light, reversing light	●	●	●	●	●	●
Headlights – Automatic on/off (with rain sensitive wipers)	-	○	●	●	-	○
Headlights – Courtesy delay	-	□	●	●	-	□
Headlights – Daytime running lights	●	●	●	●	●	●
Headlights – Bi-xenon HID (high intensity discharge) with LED daytime running lights	-	○	○	○	-	○
Suspension						
Twistbeam	●	●	●	●	●	●

● = Standard, ○ = Option, at extra cost, □ = Part of an option pack, at extra cost. **L1** = Short wheelbase, **L2** = Long wheelbase.

Performance and efficiency

	Van			Sport	DCiV	
	Leader	Trend	Limited		Leader	Trend
Engine						
Ford Easy Fuel System	●	●	●	●	●	●
Fuel tank – 60 litres	●	●	●	●	●	●
AdBlue® tank – 17 litres (standard with diesel engines)	●	●	●	●	●	●
6-speed manual	●	●	●	●	●	●
8-speed automatic	-	○	-	-	-	-
Technology						
Heavy duty battery	●	●	●	●	●	●
Active Grille Shutter	●	●	●	●	●	●
Auto Start-Stop	●	●	●	●	●	●
Acceleration control (manual transmission Diesel only)	○	○	○	○	-	-
Side wind stabilisation. Includes Curve control and Roll Stability Control	○	○	○	○	○	○
Manual Regeneration Initiation. Diesel only	○	○	○	○	○	○
Programmable Interface Module. Diesel only. Provides read only access to CAN bus data	○	○	○	○	○	○

● = Standard, ○ = Option, at extra cost, □ = Part of an option pack, at extra cost. **L1** = Short wheelbase, **L2** = Long wheelbase.

Automatic transmission (Option, diesel models only)



Comfort and convenience

	Van			Sport	DCiV	
	Leader	Trend	Limited		Leader	Trend
Interior Convenience						
Instrument panel storage box	●	●	●	●	●	●
Dual front cup holders	●	●	●	●	●	●
Glovebox lid	□	●	●	●	●	●
Single passenger seat centre console	●	●	●	●	●	●
Dual passenger under seat console	□	□	□	-	-	-
Smokers pack	○	○	○	○	○	○
Rear coat hook	-	-	-	-	●	●
Sunvisor, driver's and passenger's (driver's side includes mirror, flap and ticket pocket on all series except for Leader)	●	●	●	●	●	●

● = Standard, ○ = Option, at extra cost, □ = Part of an option pack, at extra cost.

Comfort and convenience

	Van			DCiV		
	Leader	Trend	Limited	Sport	Leader	Trend
Audio and Communication Systems						
Delete ICE pack. Pre-equipment pack (two speakers). ICE pack 30	○	-	-	-	○	-
DAB Radio, steering wheel radio controls, four speakers, AUX, MP3 capability and Bluetooth® ICE pack 2	●	-	-	-	●	-
DAB Radio with 4.2" TFT screen display, steering wheel radio controls, four front speakers, featuring Bluetooth®, USB, Voice Control and emergency assistance. ICE pack 154	○	●	●	●	○	●
DAB Radio with 6" TFT Touchscreen display, diversity antenna, four front speakers, MP3 capability and Ford SYNC 3, Voice Control, Apple CarPlay, Android Auto, Emergency Assistance**, hands-free calling, GPS, Bluetooth® and audible text messaging, 2x USB. Includes rear parking sensor and fixed rear view camera. ICE pack 10	○	○	○	○	○	○
DAB Radio with 6" TFT Touchscreen display and Satellite Navigation, four front speakers, MP3 capability and Ford SYNC 3 with Navigation Centre, Voice Control, Touchscreen, Apple CarPlay, Android Auto, Emergency Assistance**, hands-free calling, GPS, Bluetooth® and audible text messaging, 2x USB. Includes rear parking sensors and fixed rear view camera. ICE pack 9	○	○	○	○	○	○
Single slot CD player. Not available with Wireless charging. Must be ordered with ICE packs 9, 10 or 154 on Leader series at extra cost	○	○	○	○	○	○
MyFord Dock (Device dock). Only in conjunction with ICE packs 2 or 30	○	-	-	-	○	-
Wireless charging pad. Not available with CD player. Compatible with devices that support Qi wireless charging	○	○	○	○	○	○
FordPass Connect (embedded modem). Standard on vehicles built from June 2020	●	●	●	●	●	●
Roof mounted microphone (included in all ICE packs)	●	●	●	●	●	●
Steering wheel radio controls	●	●	●	●	●	●
Climate Control						
Manual air conditioning – Manual with smart recirculation function	○/□	○/□	●	●	○	○
Air conditioning – Dual-zone Electronic Automatic Temperature Control (DEATC) with electronic recirculation facility	-	○	○	○	-	-
Interior Lighting						
Courtesy lights – Front dome	●	-	-	-	●	-
Courtesy lights – Front dome light with two map lights	-	●	●	●	-	●
Lights – Glovebox	-	-	●	●	-	-
LED Loadspace lighting	○	○	●	○	○	○
Seating						
Seat adjuster – Driver 4-way manual (fore/aft + recline)	●	-	-	-	●	-
Seat adjuster – Driver 8-way manual (fore/aft, up/down + recline) includes lumbar	○	●	●	●	○	●
Seat adjuster – Passenger 2-way manual (fore/aft + recline)	●	●	●	●	●	●
Individual passenger seat	●	●	●	●	●	●
Dual passenger seat. Must be ordered together with a bulkhead with a load through hatch	○	○	○	-	-	-
Passenger seat – Flip/Fold/Tumble fold flat passenger seat functionality	○	○	○	-	-	-
Second row 3-across seating, folding	-	-	-	-	●	●

Quickclear heated windscreen (Standard on Trend, Limited and Sport)



Comfort and convenience

	Van			DCiV		
	Leader	Trend	Limited	Sport	Leader	Trend
Instruments and Controls						
Heated drivers seat (on Trend series this is only available in conjunction with a Dual passenger seat through optional Seat Packs 20 & 30)	-	○	●	●	-	-
Heated passenger seat. Only with single passenger seat. If dual seat option is taken on Limited the passenger seat is not heated	-	-	●	●	-	-
Instruments and Controls						
Door mirrors – Manual door mirror, self colour	●	-	-	-	●	-
Door mirrors – Electrically-operated and heated, self colour	○/□	●	-	-	○/□	●
Body colour door mirrors – Electrically-operated, autofold on lock and heated	-	-	●	●	-	-
Self colour door mirrors – Electrically-operated, autofold on lock and heated	-	○	-	-	-	○
Electrically-operated, power fold heated door mirrors, with Blind Spot Information System. Self colour housing on Leader and Trend; body colour housing on Limited and Sport. Includes Cross Traffic Alert	○	○	○	○	-	-
Large Door Mirrors with small secondary blind spot eliminator mirror	○	○	○	○	○	○
Rear-view mirror – Screen mounted interior (in combination with rear windows and glazed bulkhead on Van)	●	●	-	-	●	●
Rear-view mirror – Auto-dimming (included with optional Auto Headlamps)	-	□	●	●	-	□
2-speed variable intermittent front wipers	●	●	-	-	●	●
Rain-sensing wipers (requires automatic headlight activation)	-	□	●	●	-	□
Rear window washer/wiper (can only be ordered with glazed rear windows)	○	○	-	-	○	○
Rear window – Heated (standard when glazed rear window is specified)	○	○	-	-	○	○
Gearshift knob – Urethane	●	●	-	-	●	●
Gearshift knob – Leather	-	-	●	●	-	-
Steering wheel – 4-spoke PU with black shells	●	●	-	-	●	●
Steering wheel – 4-spoke leather (included with optional Cruise Control on Leader and Trend)	□	□	●	●	□	□
Driver's window – Electrically-operated with one-touch lowering	●	●	-	-	●	●
Front windows – Electrically-operated with one touch up and down (included with optional Electrically-operated, autofold on lock and heated)	-	□	●	●	-	□
Trip/fuel computer	●	●	●	●	●	●
Technology						
Quickclear heated windscreen	○	●	●	●	○	●
Option Packs						
Comfort Pack (manual air conditioning, cruise control with adjustable speed limiter) (Available on regular payload 200 and 210 GVM series only)	○	○	-	-	-	-

● = Standard, ○ = Option, at extra cost, □ = Part of an option pack, at extra cost.

The Bluetooth® word mark and logos are owned by the Bluetooth SIG, Inc. and any use of such marks by Ford Motor Company is under licence. Other trademarks and trade names are those of their respective owners. **Ford Emergency Assistance is an innovative SYNC feature that uses a Bluetooth®-paired and connected mobile phone to help vehicle occupants initiate a direct call to the local Communications Centre, following a vehicle crash event involving an airbag deployment or fuel pump shut off. The feature operates in more than 40 European countries and regions.

Safety and security

	Van				DCiV	
	Leader	Trend	Limited	Sport	Leader	Trend
Safety						
Brake light – Rear high-mounted	●	●	●	●	●	●
Seat belts – Front, 3 point, with seat pre-tensioner, height adjust and load limiters	●	●	●	●	●	●
Driver beltreminder	●	●	●	●	●	●
ISOFIX – 2nd row seats in the 2 outboard seating positions	-	-	-	-	●	●
Anti-lock braking system (ABS) with electronic brake-force distribution (EBD) and Electronic Stability Control (ESC)	●	●	●	●	●	●
Airbag – Driver's	●	●	●	●	●	●
Airbag – Front passenger's* with de-activation switch	○/□	○/□	○/□	○/□	○/□	○/□
Airbags – Driver's and passenger's side airbag (side and thorax)	□	□	□	□	□	□
Emergency Brake Assist (EBA)	●	●	●	●	●	●
Security						
Configurable locking 1. 2 stage unlocking: Stage 1 Front doors, Stage 2 remaining doors	●	●	●	●	○	○
Configurable locking 2. 2 stage unlocking: Stage 1 Front and side doors, Stage 2 remaining doors	-	-	-	-	●	●
Locking – Auto relocking. Doors relock after 45 seconds if no door is opened	●	●	●	●	●	●
Power door dead locks	●	●	●	●	●	●
Remote key and plain key	●	●	-	-	●	●
Two remote keys (no plain key included as part of this pack; n/a with fleet key option)	○/□	○/□	●	●	○/□	○/□
Fleet key (consists of an additional plain key; n/a with two remote key option)	○	-	-	-	○	-
Perimeter anti-theft alarm	○	○	-	-	○	○
Thatcham Category 1 Alarm	○	○	●	●	○	○
Security – Passive Anti-Theft System (PATS)	●	●	●	●	●	●
Brakes						
Power 4-wheel disc	●	●	●	●	●	●
Emergency Brake Warning (automatic flashing of brake lights under heavy braking)	●	●	●	●	●	●
Side Wind Stabilisation. Includes Curve control and Roll stability control	○	○	○	○	○	○

● = Standard, ○ = Option, at extra cost, □ = Part of an option pack, at extra cost. **L1** = Short wheelbase, **L2** = Long wheelbase.

•**Note: A rear-facing child seat should never be placed in the front passenger seat when the Ford vehicle is equipped with an operational front passenger's airbag.**

Utility

	Van				DCiV	
	Leader	Trend	Limited	Sport	Leader	Trend
Body						
Kerbside load door	●	●	●	●	-	-
Dual side loading doors	○	○	○	○	●	●
Unglazed rear cargo doors (hinged)	●	●	●	●	●	●
Heated Glazed tailgate	○	○	-	-	-	-
Second row fixed side window (dual side)	-	-	-	-	○	○
Privacy glass	-	-	-	-	○	○

● = Standard, ○ = Option, at extra cost, □ = Part of an option pack, at extra cost. **L1** = Short wheelbase, **L2** = Long wheelbase.

Ford Easy Fuel capless refuelling system (Standard)



Maximise your space

Transit Connect's driver-focused cockpit combines stylish good looks with smart stowage solutions. With plenty of space for bottles, phones and papers, it will help make your workday easy and efficient.

Bottles and beverages



Concealed area with charging point



Optimal cab stowage



Special Vehicle Options

Options Packs	Van				DCiV		
	Leader	Trend	Limited	Sport	Leader	Trend	MFC Code
Sortimo Van Pack – contains single side racking and safety floor (for Van only)	○	○	-	-	-	-	AAL7
Glazed Liftgate Pack – Contains glazed liftgate (for DCiV only)	-	-	-	-	○	○	AALNP
Wheel chair access conversion pack	○	○	○	○	○	○	AALNR
Paint							
Special Paint, 50 colours available, consult Dealer for details* (contains self colour rear bumper end caps and self colour front bumper on Trend series)	○	○	-	-	○	○	AB7AB

○ = Option, at extra cost, □ = Part of an option pack, at extra cost. **L1** = Short wheelbase, **L2** = Long wheelbase.
*SVO paint suffix must be entered at time of ordering.

Next steps



test drive

Visit your Ford Commercial Vehicle Dealer and test drive the Ford Transit Connect for yourself. Find your local Ford Commercial Vehicle Dealer at <https://www.ford.ie/dealer-locator>



build

Build and price your new Ford Transit Connect to your exact specification and see how it looks at <https://www.ford.ie/shop/next-steps/build-and-price-cv#/catalogID/WAEIR-CHC-2018-TransitConnectVanIRL201925/?code=BS-AE>



own

When you drive away in your new vehicle, we're with you all the way. Ford has a large authorised service network to help you keep your vehicle in the best condition. And should your new Ford ever require accident repair, a Ford Accident Repair Centre is the best place to get your vehicle back to its pre-accident condition and on the road as quickly as possible.



finance

When it comes to financing your vehicle, our size and expertise means we're well placed to provide you with a wide range of finance products.

Ford Credit provides a range of finance products for your vehicle whether you are a private or business user.

For more information about our finance products visit <https://www.ford.ie/finance/ford-credit>

The credit provider of these products is Bank of Ireland Leasing Ltd, trading as Ford Credit. The FORD and FORD CREDIT trademarks are owned by Ford Motor Company and are used under licence



contact 1890 812 813



The Ford Pass app is a new platform offering a collection of personal, digital and physical solutions that will empower you to rethink the way you move. This smartphone app provides access to Ford services, and a range of connected vehicle features. Receive traffic data, search for refuelling points, search available parking spaces and check their costs en route to your planned destination or around your current location.

Illustrations, descriptions and specifications. This catalogue was correct at the time of going to print. However, Ford policy is one of continuous product development. The right is reserved to change specifications, colours and prices of the models and items illustrated and described in this publication at any time. For the latest details always consult your Ford Dealer. **Optional equipment.** Throughout this publication, wherever a feature is described as being an 'Option' or 'Option Fitment/Pack' etc, you should assume that it will be at extra cost to the base vehicle, unless specifically stated to the contrary. All models and colour combinations are subject to availability. **Note.** Some images portrayed are of a pre-production model and/or are computer generated, therefore, the design/features on the final version of the vehicle may differ in various respects. In addition, some of the features shown on the vehicles may be optional. **Note.** This brochure contains both original Ford accessories as well as a range of products from our suppliers. Fitment of accessories may have an impact on your vehicle's fuel consumption. **+** The identified accessories are carefully selected third party supplier branded accessories which do not come with a Ford warranty but are instead covered by the third party supplier's own warranty, the details of which can be obtained from your Ford Dealer. **Note.** The Bluetooth® word mark and logos are owned by the Bluetooth SIG, Inc. and any use of such marks by Ford Motor Company is under licence. The iPod word mark and logos are the property of Apple Inc. Other trademarks and trade names are those of their respective owners. **Note.** Some driver assistance features and safety features described in this brochure are designed to function using sensors, whose performance may be affected under certain weather or environmental conditions.



Published by Henry Ford & Son Limited,
Elm Court, Boreenmanna Road, Cork,
Ireland.

BJN 207525. FoE I60E.
1119/IRL en

May 2020.

© Ford Motor Company Limited.

